

CITY OF
Johnston



2040 PLAN
COMMUNITY
ENGAGEMENT RESULTS

DRAFT SEPT. 2019



PHASE 1: LEARNING

Phase 1 of community engagement is primarily a learning phase. In this phase community members were provided with a variety of ways to give their input in the beginning of the planning process. Rather than develop plans and concepts and present them to the community, this phase seeks to first gather opinions, ideas, and other guidance from community members to help shape the comprehensive plan from the beginning. Phase 1 of community engagement included the following efforts:

- » Attending Pop-up Events
- » Online Engagement (Survey, Ideas Wall, Pinpoint Map)
- » Conducting Focused Roundtable Discussions

The results of these engagement efforts are included on the following pages.



POP-UP EVENTS

Rather than hold a number of open houses for community members to attend, the City decided to go to events where people were already attending. The City “popped-up” at the events listed below with posters, easels, and other promotional materials related to the plan and asked event attendees four simple questions and wrote down their feedback.

Summary from Following Events:

- » Kites on the Green - 5-4-19
- » Ray Schleis 50th Picnic - 5-14-19
- » Crosshaven 50th Picnic - 6-18-19
- » Farmer's Market - 7-9-19
- » Adventure Ridge 50th Picnic - 7-16-19
- » Sundae in the Park - 8-11-19
- » Dewey Park 50th Picnic - 8-13-19



I MOVED TO JOHNSTON BECAUSE...	VOTES
Schools	19
Family/Family Atmosphere	5
Safety/ Low Crime	4
Centrally Located; Short Drive to Des Moines	4
Small Town Feel/ Sense of Community/ Great Community	3
Fun Community Activities	3
Job	3
Low Cost of Living/ Housing Prices	2
Land Space/ Green Space	2
Micro/Nano Brewery	1
Good Investment/ Growth	1
Neighborhood	1
Adult Trees	1
Friendly People	1

POP-UP EVENTS

I WILL STAY IN JOHNSTON BECAUSE...	VOTES
Schools	12
Community events, great neighborhoods! / Kite Festival	9
Thriving Community/ Growth of Quality of Life	5
Safety/ Low Crime	3
It's Beauty	2
Opportunities for Families and Individuals	2
Parks/ Terra Park	2
It is a small town, but in the middle of the big city!	1
It is equally far, but also close, to anywhere and anything you could want or need	1
Micro/Nano Brewery	1
The Library	1
Family Friendly	1
Effective Management of Retail Growth	1
Housing	1
Trails	1

MY FAVORITE THING ABOUT JOHNSTON IS...	VOTES
Schools/ Teachers	15
Parks	8
Trails	6
Terra Park - Great natural landscape / Playgrounds	5
Scenery/ Amazing Nature/ Green Space	3
Library	3
Everybody is friendly / nice people	2
Floating/ Playing in the Creeks	2
Sense of Community	2
Safety	1
Public Events	1
Convenience of Shopping Close by	1
Snow Removal	1

POP-UP EVENTS

I WISH WE HAD A _____ IN JOHNSTON.	VOTES
Splash Pad, Pool or Aquatic Center	38
Dog Park	9
YMCA	5
Walking/ Biking Paths-Trails / Connecting Trails-Sidewalks	9
o Wooded Dirt Trails *Not all trails need to be paved	1
More/ Better Restaurants	3
More Community Meeting Space / Community Recreation Center	3
Micro-Brewery	3
More Kids / Kid Activities	2
No Roadwork/ Bridge Fixed	2
Teen Center	2
More Local Boutique Shopping/ Shopping Center	2
Trampoline Park/ Ziplines	2
Amphitheater/ Live Music	2
Stables	1
Auto Parts Store	1
Target	1
Outdoor Archery	1
Community Theater	1
Drive-In Movie Theater	1
Public Art	1
Fitness Center- Like Lifetime Fitness/ Gym with Childcare	2
More Indoor Recreation	1
A Mall	1
More Country, Land Place	1
ALDI's	1
Sports Center/ Event Center	2
Walkable Downtown	1
Skate Park	1
Hotel	1
Art Classes/ Art Center	1
Disc Golf	1
Less Pollution	1
Environmentally Sensible *instead of being spread out, having more mixed use	1
Event Center	1

Page Intentionally Left Blank

ONLINE ENGAGEMENT

Online engagement has become a very effective and efficient way to collect feedback from the community. This type of outreach gives community members the ability to provide their thoughts and ideas from the comfort of their homes, place of work/school , and on the go. Online engagement took place from **JUNE 24TH TO AUGUST 29TH 2019**. Online feedback was collected through three methods:

- » **Ideas Wall:** The ideas wall is best described as an online version of a wall where people can post “sticky notes” with various ideas and thoughts. This platform allowed the community to share thoughts and ideas related to 5 different questions about what makes Johnston thrive.
- » **Pinpoint Map:** The pinpoint map allowed community members to show the City the things that make Johnston thrive and what doesn’t on an online map. Pinpoints were categorized into five main topics to help guide the type of feedback.
- » **Survey:** A traditional survey was conducted as well to allow community members to answer a variety of questions to help the City understand what makes Johnston thrive. The survey also gave the City the opportunity to understand the demographics of people participating in the online engagement process.

The results from the online engagement efforts are included on the following pages. The ideas wall saw a total of **3,189 VISITS** with **93 COMMUNITY MEMBERS** providing **121 COMMENTS**. The pinpoint map saw a total of **660 VISITS** with **48 COMMUNITY MEMBERS** providing **206 COMMENTS**. The survey saw a total of **62 PARTICIPANTS**.



ONLINE ENGAGEMENT - IDEAS WALL

WHAT MAKES JOHNSTON UNIQUE AND INTERESTING?

COMMENT	UP VOTES	DOWN VOTES
Could we please attract someone willing to open a brewery? This could be part of the town center.	13	2
We'd love to see some solid development in the area of restaurants, retail, and libations. Other communities have supported the development of centers, such as Prairie Trail, The District at Prairie Trail, East Village, tons of spaces in Waukee - Johnston needs to do something of the same. It gets old having to leave and drive to other parts of the metro just to get a decent meal.	11	0
Link together Johnston trail system... permit all Johnston residents to get to (1) downtown area, (2) schools, and (3) sycamore access without traveling on city streets.	8	0
I love the bike trails, especially the new one on Beaver Drive. I agree with connecting the bike trails within Johnston as much as possible so they may be used to reach the Library and parks-and hopefully other recreational activities.	8	0
AgriTech and BioSciences Hub With Corteva, John Deere Financial and ISG, Chubb Ag/ Rain & Hail, Agricredit/DLL, Farmer Mac, Agri-access, Iowa Power Farming, Corn Promotion Board, Agstar Financial, etc. Johnston needs to do more to encourage venture funding for start ups and agri tech companies.	7	0
Small town feel with great access via trail system once the Trestle to Trestle bridge is rebuilt.	6	0
Keeping a small town feel with events like Green Days, Kites on the Green, and Fire Dept functions.	6	0
Continuing to pursue the river project for kayak and other recreational use would be fantastic. Johnston could help lead the way on clean water revival. My family just visited the "Gathering Place" in Tulsa OK (https://www.gatheringplace.org/). There's a lot of great things there that Johnston could model, even on a smaller scale. (natural playscapes, soccer, basketball, disc golf, restaurants, scooter rental, biking, board game play, etc.). Fosters community.	5	0
Kite Festival	5	1
Would love more restaurants, breweries, coffee shops, outdoor entertainment areas & shopping areas. Would also like to see a dog park in Johnston; Kansas City has this amazing dog park that connects to a brewery, food truck area and live music spot (https://www.barkdogbar.com) & something like that would be a very welcome addition to our community as well.	4	0
Bike trails & natural area around Beaver Creek	3	0
Great Schools, close knit communities	3	0
We would like to see an aquatic center with a lazy river running around the perimeter. A lazy river allows parents to interact with their children while in the water and makes a pool more attractive to all age groups.	3	0
walking path around library		
Green space everywhere possible for environment, enjoyment, and attraction.	3	0
Too high of property taxes. Too many roundabouts. Not happy about discontinuing the ability for personal fire works.	2	12
Plans for Kayak launch point on Beaver Creek will be a great addition to local outdoor activities	1	0
Beaver Creek and its natural corridor. With such an asset, we need to protect the floodplain and the riparian corridor. The whole watershed needs to understand that stormwater needs to, as much as possible, be captured and infiltrated where it falls. We can't enjoy the river unless pollution of the creek is addressed.	1	0
Terra Park, Beaver Creek, trails.		
Childserve	1	0
Heavily traveled 54th Ave. needs to be re-surfaced. It has gotten very rough again.	1	0
All the parks, trails and variety of playgrounds for kids. Love the new Terra Lake area!	0	0
Small town charm.	0	0

WHAT MAKES JOHNSTON UNIQUE AND INTERESTING?



ONLINE ENGAGEMENT - IDEAS WALL

WHAT IS THE MOST IMPORTANT REASON YOU AND YOUR FAMILY CHOOSE TO LIVE IN JOHNSTON?

COMMENT	UP VOTES	DOWN VOTES
Small business development, retail and dining.	11	0
Moved here for quality schools, green space, safe community.		
But we need restaurants, a city center and absolute #1... an aquatic center. We are the only suburb without one - it's bizarre.	11	1
Too many townhomes and apartments going up on the west side of town. Seems to cause traffic issues.	11	3
We loved the small town feel with the upscale neighborhood and great schools. We paid for the Green Meadows...I am disliking the apartments going up everywhere. Our schools are getting busier and we want to make sure our neighborhoods stay safe and that we know our neighbors.	11	6
I would like to see a town center with shops, restaurants, and grass gathering area/park. It would be ideal to have a location where the trails converge. In this location, community events could be scheduled. Examples would be Farmers market, food festivals, parts of Green Days, talent shows, holiday themed activities. It could be the start and finish of local fun runs. A way to have a focal point to bring the community together for activities.	8	0
Good schools	8	0
Schools, connected to Bike Trails, Neighborhoods that are not cookie cutter homes.	6	0
Nice, quiet, location, affluent	5	0
Agree with building a public pool. Also agree with no more apartment buildings! The city does a great job with many things in our community, but adding so many multi-family structures was a mistake. Our neighborhoods such as Green Meadows & G.M. West bring such character to our city. The initial investment into designing the new areas similar will be worth it long-term.	5	2
Public pool, softball. No more apartments. Change zoning to require green landscaping including trees. Too many look like prison complexes with nothing green around. Beef up Farmers Market. The vendors don't have any competition. Need something to draw people just as music does to Valley Junction. Food, to eat there. Make it more of a destination. It's an after thought. Local retail on Merle Hay. Make 54th a through street. Don't forget the singles. Make Johnston have character, be unique.	5	2
Improving narrow sidewalks on Merle Hay; specifically, the Hy-Vee Gas corner where a person in a wheelchair has to exit the sidewalk to the street to enter the cross street sidewalk.	4	0
Easy to get around, no mall traffic, quiet	4	0
The schools are great!	4	0
We feel safe with the low crime rate, and the schools are very good.	3	0
A strong, healthy, diverse school system.	3	0
Quality of schools. Quiet neighborhoods with strong property values. Sense of belonging. Great location in the Metro	2	0
Schools are great	2	0
Great schools, great people	2	0
Close to Jordan Creek and Valley West but not in the traffic fray	1	0
small town feel and small town celebrations like green days.	1	0
As a 33 year resident I would like to see another cemetery. I have been told several times that our cemetery's are full and no plans for any in the future. Ended up buying lots out of Johnston. The corner of MHR and Johnston Drive might work because of its tree problem preventing anyone from building on it.	1	0
Love Johnston! Would suggest a Trader Joes type grocery & a Cheddar Scratch Kitchen restaurant. Also, PLEASE nix investment in pricy landscape sculpture. Our town is beautiful without those distractions!	1	0

ONLINE ENGAGEMENT - IDEAS WALL

WHAT IS THE MOST IMPORTANT REASON YOU AND YOUR FAMILY CHOOSE TO LIVE IN JOHNSTON?

COMMENT	UP VOTES	DOWN VOTES
Small town charm	0	0
childserve. Help with community activities that facilitate social groups with kids served by childserve.	0	0
The Johnston community means high quality schools, great neighbors, safe streets and quality homes. I think we have enough apartments and need to change any remaining zoning to owner occupied townhomes as an answer to multi family housing. The town center is a good concept, but as mentioned, it needs a destination, a purpose. Not as a "if you build it they will come" as the current concept appears. Add a splash pad, water features. make it pedestrian only and/or bike only area with shops	0	0
Close to (old neighborhood) and affordable housing that was on a recreation trail.	0	0



ONLINE ENGAGEMENT - IDEAS WALL

WHAT DO YOU THINK IS THE MOST SERIOUS ISSUE FACING JOHNSTON TODAY?

COMMENT	UP VOTES	DOWN VOTES
Over development of apartment complexes.	20	1
I agree with the need to halt high density development. The apartments and condominium projects to the west are ugly. The newer housing developments are not much better. No character; no neighborhood feel; just money makers for the developer with no thought to the future. Please stop. We are a residential community and there are more than enough beige identical condos and apartment buildings.	19	4
Lack of a community center / fitness center / YMCA.	18	0
Lack of public pool/aquatic center which severely limits options for swimming lessons and over development in apartments/multi-family housing	17	1
Lack of continuous sidewalks. Especially around the terra lake and childserve area. There is no reason why child serve should have to be walking with its residents in the street everyday! We need a safer option for them and the community.	16	0
Merle Hay re-development is long over due. There is no "town center" in Johnson	12	0
Sidewalks and trails are not connected. There needs to be a safe way for bikes and pedestrians to travel on 86th street as it is a major connector to the rest of the metro and you cannot cross the interstate. Since the bike trails through the Merle Hay area are regularly flooded, this is not a practical route for people using bikes or walking as a form of transportation and not just recreation. Trails should be connecting people to services and schools as well as the rest of the metro.	11	0
Cookie cutter apartments The developers don't live here, and all they care about is maximum profit. Meanwhile these beige boxes will be an eyesore for decades to come. Enforce landscaping requirements and create some rules regarding aesthetic appeal.	8	2
We need more restaurants, retail, and nightlife/entertainment. Right now we are forced to go to neighboring cities to get good food or drinks or for entertainment	7	0
Losing its small town feel. Getting overdeveloped. Turning into just another suburb.	6	3
It was a bad move to get away from the Green Meadows Planned Community concept, with nice curvy roads and great homes, and now packing our town with unsightly apartments and traffic, along with many other bad consequences. Most people moved here precisely for the upscale, quite, Green Meadows community look and feel. What gives?	6	3
Dependence on Few Large Employers	5	0
Better blend of shopping and residential. If a person wants to buy anything besides groceries they are out of luck!	4	0
Road wear & tear should not be as bad with how high property taxes are. Also would be nice to get some more connections on the various bike paths - my neighborhood isn't connected & requires travel on a busy street to get out.	4	0
What is Johnston doing relative to changes in the mobility industry (electrification, autonomous vehicles, ride sharing)? Are our roads / parking areas ready for the future?	4	0
Lack of connecting bike paths.	3	0
Taxes are too high and too many apartments.	3	2
Climate action at the local level.		
We need an Energy Policy task force and support staff to work on sustainable practices, with inventories of green house gas emissions and benchmarks of building's energy consumption.	3	3
Land locked for bigger tax base.		
Lack of cemetery.	2	0
Just cover 86th in asphalt already, it's as bumpy as a gravel road.	2	0

ONLINE ENGAGEMENT - IDEAS WALL

WHAT DO YOU THINK IS THE MOST SERIOUS ISSUE FACING JOHNSTON TODAY?

COMMENT	UP VOTES	DOWN VOTES
Merle Hay Road is getting very rough and needs to be looked at in capital plan	2	0
Lots of comments about the high taxes. Density is the only way to fix the problem. Single Family Homes pay less in taxes per acre than any other type of development. Need high density development to balance that out.	2	0
Lack of sidewalks leading to Terra Park Too many round-about No need for town center No adequate restaurants on Merle Hay side of the city NO MORE apartments Property taxes too high	2	4
Serious lack of recreation facilities. We need a public pool, YMCA, city rec facility.	1	0
I am beyond disappointed about changing speed limit on 62nd between Beaver and MH road from 25 to 35. That road was unsafe at 25 due to not having a side walk, being a one lane road that is so close to residential area and right in front of elementary school. Stop spending tax payers money on making 3-4 foot wide side walks on Beaver (in wealthier part of Johnston) while other parts are lacking basics.	0	6



ONLINE ENGAGEMENT - IDEAS WALL

PLEASE INDICATE CHANGES THAT YOU THINK WOULD HAVE THE GREATEST IMPACT ON IMPROVING THE QUALITY OF LIFE IN JOHNSTON?

COMMENT	UP VOTES	DOWN VOTES
Reverse the trend for high density housing	25	2
Build a community center / fitness center / aquatic center. Our kids have nothing other than KTC for after school care.	22	2
Fewer Apartments and Section 8 housing.	22	5
Build an outdoor pool-it does not have to be a gigantic water park.	20	1
Fewer strip malls. Consider a town center concept that would attract mix of business/retail/entertainment.	19	0
Desperately need a ymca/rec center and community pool. Kids need a place to hang out in summer; families need physical fitness.	18	2
We need a public pool!	17	2
Please revisit your zoning and eliminate zoning for apartment complexes for the next 10 years. Your studies that demonstrate a need for apartments doesn't mean JOHNSTON residents need to accept more apartments, or that WE want more apartment complexes. These will become very run down looking in 10-20 years. 800 along Merle Hay, crowding our schools. Crowding our main streets. There is a desire to maintain and grow nice single family developments. Go back to that type of growth please.	17	8
Need to connect partial bike trails to promote better usage and safety.	13	0
Redevelop the Merle Hay corridor and give us a town center. Johnston has no sense of "downtown" or central gathering place.	13	0
Public pool, softball fields, and sand volleyball courts with organized rec leagues and weekend tournaments. Outdoor band shell for summer live music concerts or even small festivals.	13	0
Please add more sidewalks. Or expand roads to make room for bike lanes. It's crazy how only parts of Johnston have sidewalks while other parts you would have to walk on the road or uneven landscape.	12	0
Build a pool-it does not have to be a giant water park.	12	3
Keep prioritizing the things that contribute to an active lifestyle; nearby parks, connected sidewalks and trails, good, reachable destinations, programmed activities for children, seniors, and all who would be interested.	11	0
More restaurants	10	0
Sprayground splash pad for kids	10	0
The Merle Hay @ 62nd intersection and area around it need to be redesigned to be more pedestrian and bike friendly.	8	0
More sidewalks for bikes/pedestrians west of 86th street. There is no bike path from Horizon elementary to 100th street bridge and that's a very busy road, but bypasses 86th and 141. Desperately need a ymca/rec center and community pool. Kids need a place to hang out in summer; families need physical fitness.	8	1
Less focus on cars	7	2
Stop zoning for apartments, we do NOT want to have high density housing in our city. One of the most attractive things about Johnston is the homeowner community. Grow single family developments in detached homes or townhouses.	7	5
better restaurants. I like the City Center idea	6	0
Although we have a great school system in Johnston, my family often travels to nearby communities (Waukee, Ankeny, WDM) because they offer so many more amenities for children. Examples: the new Waukee splash pad and park (super awesome, BTW), the Ankeny water parks, Prairie Trail area, dog parks, Des Moines children's museum ... why can't Johnston support these types of things? We have the families here, now let's keep them busy on the weekends by offering things in town for them to do.	6	0

ONLINE ENGAGEMENT - IDEAS WALL

COMMENT	UP VOTES	DOWN VOTES
What is Johnston doing to attract new businesses, particularly in high tech industries? We are too heavily reliant on several key employers (almost all in the same industry)	5	0
We need a town center and more dining options.	5	0
I would love to have a dog park in Johnston. We have room for one and plenty of dogs who would enjoy it!	5	1
Events that are planned for adults without children (or those with children who would like to get away) would be much appreciated. My neighborhood has many young families but we all leave Johnston for entertainment. Recreational sports leagues, concerts, food events etc	5	2
Keeping streets better maintained.	3	0
Partnership with Childserve to ensure they have the necessary land available to them as they continue to grow.	3	0
Improving 62nd ave east of Merle Hay; extending with a median similar to the stretch by the Jr. High and Wallace would be good for flow and aesthetically pleasing	3	0
I-80/35 and Merle Hay interchange is in need of improvements for traffic flow both now and to manage continued growth. A diamond interchange style would be helpful so traffic can move fully through the interchange versus being stopped before exiting the interchange.	3	0
Need more single family detached homes in the \$200K - \$300K range and less apartments and townhomes.	3	3
Dog park please. We seem like the only suburb missing one!	1	0
We need a recreation center or YMCA. The old Wallace would be a perfect fit to create a recreation center. We need a public pool that serves the whole family.	1	0
Consider the extension of Johnston Drive to the WEST and create a rear service road access for Childserve & businesses south of Pioneer Pkwy and north of I-35/I-80. Southbound traffic backups on MHR are worsening and the current MHR median/lane configuration south of Johnston Drive should be updated to improve capacity, safety, and mobility for all users, including bikes and peds. A rear service road could also provide parking and access to the Beaver Creek trails and future park planned here.	0	0
Connect the community with WIDE sidewalks. No more apartments! Make Johnston a place where I can do everything I want/need to do in a day.	0	1



ONLINE ENGAGEMENT - IDEAS WALL

HOW DO YOU SEE JOHNSTON IN 20 YEARS?

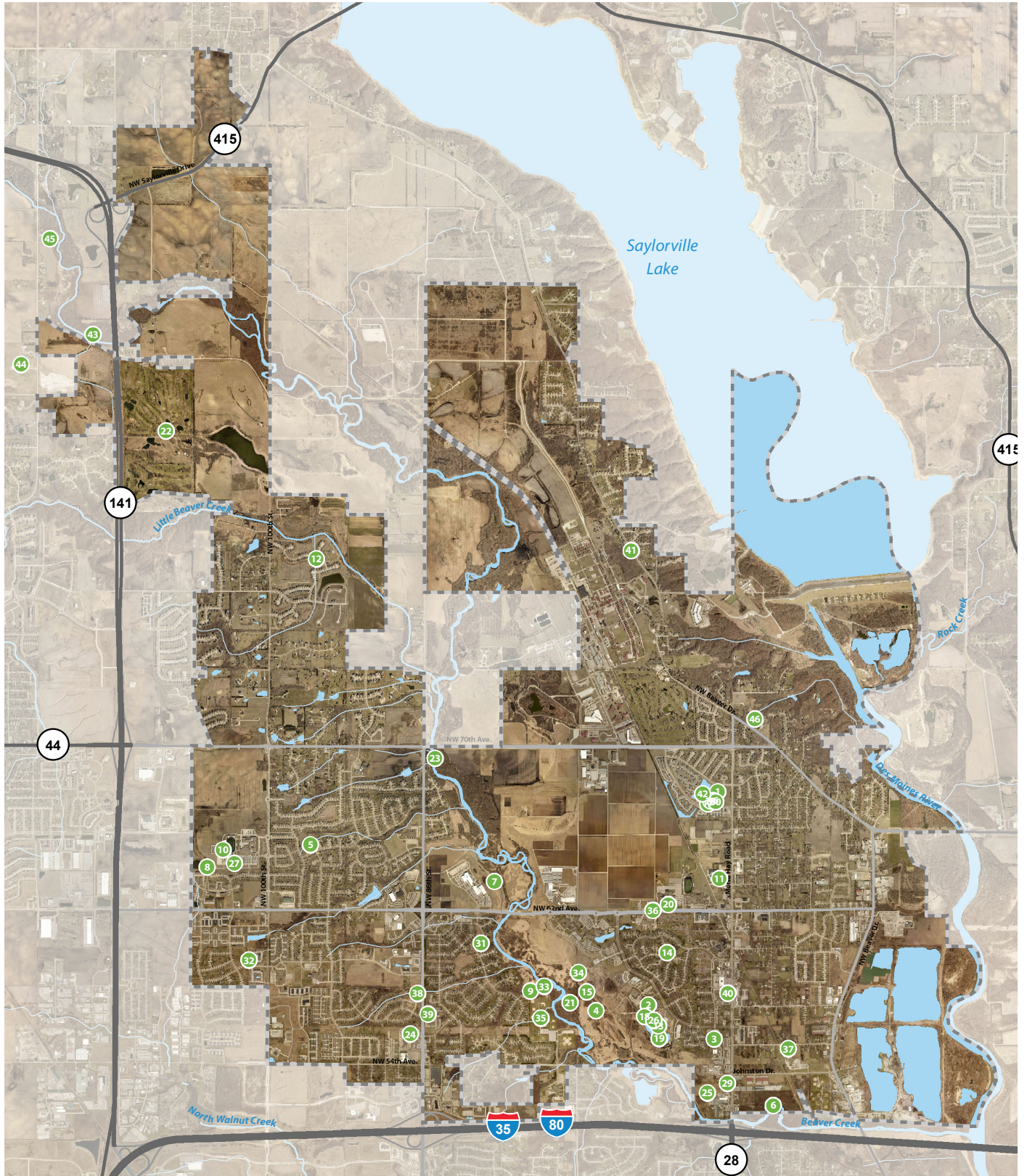
COMMENT	UP VOTES	DOWN VOTES
Johnston needs nice restaurants, not chains. The only upscale restaurant we have is Greenbrier. We need more local restaurants like this , say another St. Kilda's, Django, Table 128. We also need more small grocery stores like Trader Joes and Fresh Thyme. We have to drive a long way to shop at these stores and to eat at these restaurants.	20	1
We need a landmark spot similar to West Glen in WDSM, The District in Ankeny, Kettlestone in Waukee, or East Village/Court Ave in downtown Des Moines.	14	0
With the boom in craft brewing, Johnston has not acquired a craft brewery; would be a nice addition	13	1
Johnston should focus on giving new residents the same experience that attracted them to the area for the last 20-years. Top-notch schools, sustainable developments, great infrastructure and a strong sense of community. It needs to do a better job with retail shopping and dining, a community center, and bike/pedestrian friendly areas	12	0
Some open spaces preserved. More trees. Large trees maintained. Developers stopped from clearcutting land and putting up ugly apartments and big box stores. Instead, some natural beauty is maintained--even cultivated!--and a prairie style architecture perseveres.	10	0
A "green" community. Very walkable. Development that minimizes "sprawl." Energy efficient practices throughout the city. Less reliance on automobiles.	8	0
build places of community for families. I saw someone comment below about a community pool and it not needing to be a huge waterpark. I would reiterate this.	7	0
Will the quarries still be in business in 2040? What will we do with the with this area when they are abandoned? Would be a great opportunity to migrate into a park and recreational opportunities.	6	0
Higher taxes with very little growth.	6	1
Has it occurred to anyone that restaurants and all these other amenities that everybody wants locate where the people are? We absolutely need to encourage ALL types of housing in our city, especially medium and high density along Merle Hay. That's the only way the MH Gateway and Town Center projects have a chance to succeed and an absolute must if we're ever going to see new dining and retail amenities move into that area.	5	2
If we do not see more retail and dining options in the near future as well as a town center we will see Johnston as the suburb we use to live in	3	0
A thriving community with efficient development and transportation.	3	0
Embrace the diversity Johnston is beginning to attract with the big ag businesses. Encourage more diverse events and stores/restaurants	3	1
Walkability! I don't necessarily mean that in the sense of trails but rather communities within the city where people can walk from home to entertainment options and businesses. Think West Glen, East Village, Ingersoll Avenue, or the Iowa River Landing in Coralville.	2	0
This city needs a destination that is widely visible and would attract many people to the area. A waterpark similar to Lost Island in Waterloo would be a great addition to for this side of the metro.	1	0
Hopefully a center point of the city. Doesn't feel like we have a central meeting place for events or things happening around town. The library and Simpson barn have seemed to serve that purpose for a number of events but doesn't feel like a true focal point for the community.	0	0
more shopping choices, focus on local not big box generally. Need a sprouts or trader joes.	0	0
Car free. Majority walk, bike, everywhere.	0	0
Energy efficient and community solar available.	0	0

HOW DO YOU SEE JOHNSTON IN 20 YEARS?



ONLINE ENGAGEMENT - MAP COMMENTS

LIKE IT! COMMENTS



ONLINE ENGAGEMENT - MAP COMMENTS

LIKE IT! COMMENTS

MARKER NUMBER	COMMENT	UP VOTES	DOWN VOTES
6	Like the woods here - any development should preserve them.	6	0
11	higher density living options add more to tax revenue which in turn helps maintain existing infrastructure. It also provides alternative housing options for people who don't want or need a single family home.	6	6
1	great to have greenspace around library	5	0
7	LOVE this trail	4	0
10	High school is amazing, could use more shops around it in vacant lots.	4	0
17	Our library is awesome. Great staff who are willing to help patrons. Excellent resources and programs.	4	0
20	Love the new Early Learning preschool center & it's indoor playground	4	0
23	Looking forward to the Kayak drop point	4	0
9	love this trail	3	0
5	Great greenspace in this neighborhood	3	0
3	Need to do what we can to ensure Childsere's continues success and growth.	3	0
4	Keep this as natural and undeveloped as possible. Edencrest really encroached on it. Please stop.	3	0
16	Love this greenspace and we have an amazing library. My children love playing here and I've used the common space for work when Wifi has been down.	3	0
15	Please leave this greenspace here! We use this constantly and love it!	3	0
8	I like how the roads are coming together	2	0
2	IPTV is a great asset to the community	2	0
12	Love living in a conservation community - feel more of these would be a benefit to our city.	2	0
13	We love Terra Park! My family walks there often and my children love running around and the rocks they can walk over the water on.	2	0
24	Like the addition of Wasabi and Gusto to Johnston. We need more restaurants to attract residents to eat local	2	0
34	trails are wonderful resource	2	0
14	Love the greenspace in my neighborhood! Thanks for keeping it up!	1	0
21	The trails are great. Please keep this greenspace!	1	0
18	Really appreciate the Free Yoga in the park. Would love to see that expand to more dates.	1	0
22	Beaver Creek Golf Course is a nice place to play on the NW side.	1	0
26	Great work with Terra Park! A favorite of ours!	1	0
28	Like the library	1	0
35	little league program is fantastic	1	0
33	water trail will be a great amenity	1	0
41	bike trail on beaver has been a great addition to this area.	1	0
46	Need to ensure Youth Homes of Mid-America continues to have a home in Johnston.	0	0
43	Beaver Creek Greenbelt	0	0
45	Beaver Creek Greenbelt	0	0
19	Love lake & trail	0	0

ONLINE ENGAGEMENT - MAP COMMENTS

LIKE IT! COMMENTS

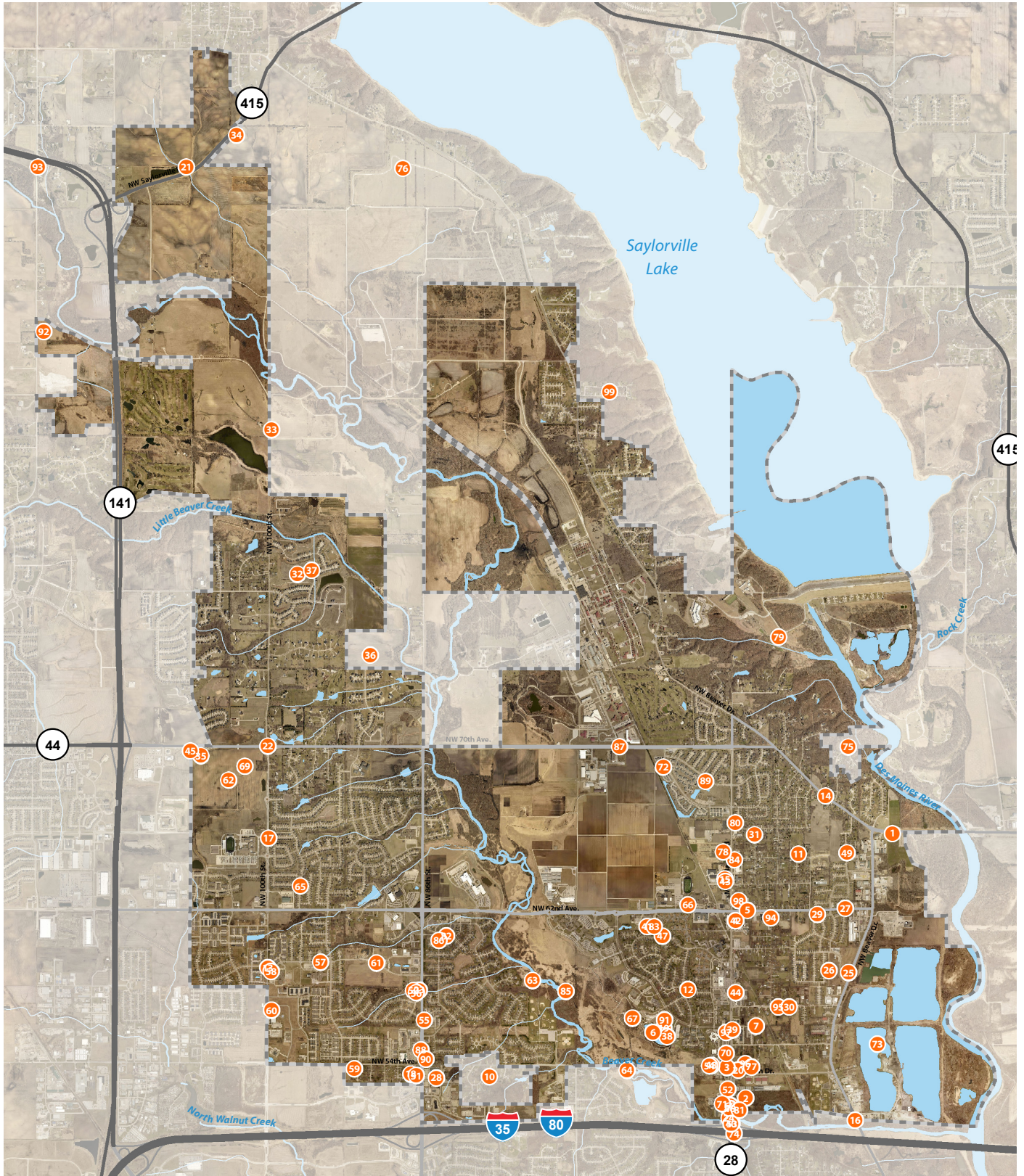
MARKER NUMBER	COMMENT	UP VOTES	DOWN VOTES
25	Please remember this is a floodplain. Its purpose is to slow down, store, infiltrate, and filter pollutants from floodwaters. Let it do its job!	<input type="radio"/>	<input type="radio"/>
29	Best pizza place in Des Moines metro!	<input type="radio"/>	<input type="radio"/>
27	Great school	<input type="radio"/>	<input type="radio"/>
30	Enjoy the green space and the library.	<input type="radio"/>	<input type="radio"/>
31	need more open space and native vegetation in the newer neighborhoods.	<input type="radio"/>	<input type="radio"/>
32	prefer this type of higher density housing to all the apts on Merle Hay and 62nd. Small patio homes or duplexes no more apts.	<input type="radio"/>	<input type="radio"/>
36	great school facilities	<input type="radio"/>	<input type="radio"/>
38	Great Amenity, used much by many people	<input type="radio"/>	<input type="radio"/>
37	like green infrastructure improvements being used around town	<input type="radio"/>	<input type="radio"/>
39	Best Neighborhood in town. Also pays more in property taxes per acre than any other location in Johnston.	<input type="radio"/>	<input type="radio"/>
40	Greenbriar is friendly and has both casual and formal dining.	<input type="radio"/>	<input type="radio"/>
42	Great Barn. Good job historical society.	<input type="radio"/>	<input type="radio"/>
44	Stagecoach Estates is a new estate residential development that is compatible with the rural/natural character of the surroundings.	<input type="radio"/>	<input type="radio"/>

ONLINE ENGAGEMENT - MAP COMMENTS

Page Intentionally Left Blank

ONLINE ENGAGEMENT - MAP COMMENTS

NEEDS WORK COMMENTS



ONLINE ENGAGEMENT - MAP COMMENTS

NEEDS WORK COMMENTS

MARKER NUMBER	COMMENT	UP VOTES	DOWN VOTES
15	For the love of God, STOP WITH THE APARTMENTS!	20	5
2	Eye sore as you enter the city.	16	0
4	Abandoned area, an opportunity for redevelopment	12	0
13	Needs a turn lane, during busy times this is unusable and becomes a parking lot.	12	0
3	Eye sore, poorly maintained property.	11	0
43	Another vote for NO MORE APARTMENTS!! Stop!!!!	11	4
14	Some consistent sidewalks would be nice, can't walk or bike here without fear of being taken out by cars/trucks.	10	0
5	62nd street needs work, extending median from middle school and Wallace would help with traffic and safety.	9	0
44	Outdated pole signs, shabby looking interiors, poor property management. This belongs in Texas not Johnston.	9	0
20	Big \$ property not contributing. Oh but great trees!	8	0
28	Our theater is losing the battle of up and coming technology. It needs work!	8	0
27	this road needs upgrades.	7	0
29	Wider road, sidewalks are a MUST.	7	0
46	Need to improve flow of traffic from Pioneer into Des Moines and onto 80/35. This area gets so backed up, even during non rush hour times. And then vice versa, it could be very low traffic but you could be stuck at a light for much longer than needed.	7	0
1	in serious need of a traffic light when the complex is in use.	7	1
7	Connect Pioneer Parkway to Beaver	6	0
10	Why is this area not part of Johnson? Could it be acquired?	6	0
52	Something needs to be done on this open lot	6	0
62	Aquatic Center or outdoor shopping/restaurant walking area instead of more multi-family facilities or retirement homes	6	0
35	At one time, there were rumors of a YMCA / Community Center with Hope Ministries. Is that plan dead? We need a community center / fitness center in Johnston	6	1
45	Capitalize on Grimes growth here, plan for the next Town center here.	6	1
23	I see people want to enjoy this but where would they park?	6	2
17	Roundabouts could use additional landscaping and more interest	6	2
16	Extend turning lane to bridge so dump trucks don't stop traffic.	5	0
51	In need of better restaurants, not strip malls and fast food	5	0
36	Can the city annex this area of the map so that we can connect Valley Pkwy between 100th and 70th?	5	1
19	Needs trees/shade	4	0
38	The smaller ponds and sides of larger pond always seem to be covered in green algae/gunk....is there a way to keep this water clean and fresh looking rather than so scummy?	4	0
42	Good place for a brewery?	4	0
49	Can't we build a through road here?	4	0
55	Sidewalks up and down 86th end abruptly and don't connect to existing sidewalks. They also don't extend on both sides of the road to 62nd. There are also no good bus stop locations for those that use it along 86th. A pad to actually stand or a bench. When it is very hot, raining, or very cold the folks waiting for the bus look very uncomfortable.	4	0
48	Can we build a through road here? With construction going on all the time, this would be so nice.	4	2
24	would love an alternate path in times of flooding	3	0
39	Needs a left hand turn only lane from Pioneer Pkwy onto Merle Hay Rd.	3	0
59	54th needs widened and re-surfaced.	3	0

ONLINE ENGAGEMENT - MAP COMMENTS

NEEDS WORK COMMENTS

58	Needs dedicated turn lanes. Often times a left hand turner takes up the entire duration of the green light as they can't get across traffic and no one gets through the intersection.	3	0
30	Strange bottlenecks in road with new road construction/drainage inlets. Causes traffic to stop to allow 2 wider vehicles to pass Same on 55th	3	1
32	Would be great to have an elementary here - going all the way to Wallace seems inefficient.	3	1
37	What is the city / school board plan for this site? The local residents were told (by Hubbell) that this would be an elementary school - now our kids are bused across town instead. What has to happen for this to be developed into a school? Residents are afraid the city will sell this land build apartments instead - that would be a disaster	3	1
34	How will the police and fire / EMS respond to and service the extreme north end of town?	3	2
54	Extend 54th through to Merle Hay	3	2
64	Continue 54th connecting 86th and Merle Hay. The city is VERY choppy and inconvenient making the city almost feel divided.	3	2
68	I can't count how many times I've been stopped at this intersection with no cross traffic. Could it be a roundabout instead?	3	3
11	In need of improvements for accessibility	2	0
25	Need streetlights!	2	0
26	this trail needs to be maintained on the east side and stop letting the locals not pick up their dog deposits!	2	0
33	It would be great if 100th street would continue north to Towner Dr or even Rowe Dr or Mile-Long Bridge.	2	0
41	Is this park going to stay open? It is used heavily by our neighborhood and you can find families there most evenings. However, there are no trash receptacles there any longer and it doesn't seem as if anyone is keeping it clean.	2	0
53	The entrance into Johnston looks horrible and not a good representation of Johnston	2	0
78	Great location for a YMCA!	2	0
71	Terrible entry into city-needs beautification	2	0
84	need sidewalks	1	0
31	Sidewalks for residents along streets in this neighborhood. For safety and community bonding.	1	0
50	Needs a playground for the neighborhood	1	0
47	The playground at the old Wallace needs to be kept up and even add play structures. It is used by many in the neighborhood	1	0
6	Lots of dead fish left on shores, garbage and fishing line. Needs cleanup and enforcement.	1	0
60	62nd needs to be widened and dedicated turn lanes added.	1	0
61	Area would be great location for rooftop patio - restaurants or brewery	1	0
73	Will quarry remain active in 2040, if not a what will become of this land? Opportunity for redevelopment for recreational use.	1	0
75	Could this chunk of land on the west side of the river be incorporated into Johnston?	1	0
77	Could this area be turned into a park greenspace park? Remove dead trees and add plantings that would attract (meant to say attract?) butterflies, possible splash pad area. We seem to be the metro city without a splash pad.	1	0
83	Should be utilizing and partnering with schools for a community rec center and using the gym and spaces at the old Wallace instead of admin offices. We need a centrally located community recreation center.	1	0
85	trail is in jeopardy by creek	1	0
92	Land uses adjacent to this area recently annexed into Johnston are already established within the county as estate residential (single family homes with 3+ acre lots) and conservation lands (Beaver Creek Greenbelt). The city must be respectful of these existing residents and the rural/natural character of the area. This will require a strong leadership from city officials and a creative approach, as developers' proposals can be expected that will not be compatible with the surrounding community.	1	0
21	what a nightmare to provide services	1	1
76	Acquire land around Camp Dodge as part of Johnston.	1	1

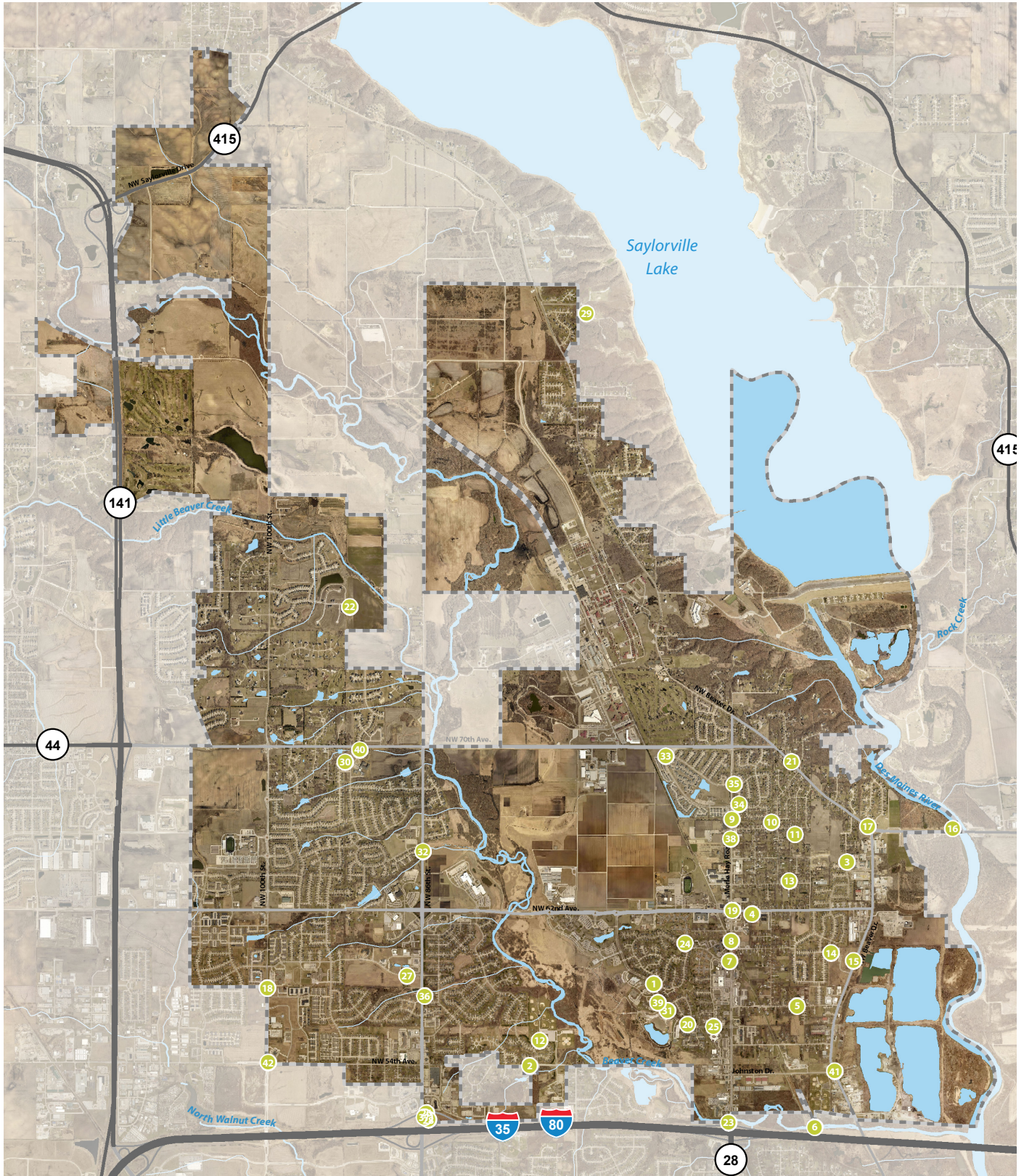
ONLINE ENGAGEMENT - MAP COMMENTS

NEEDS WORK COMMENTS

18	Why was a neighborhood and trees ripped out here to cram in development, when there is acre upon acre of open land lining I-80 and elsewhere?	1	8
22	roundabouts are fine but on NW 70th they are dumb!! How do they effect Camp Dodges ability to do business?	1	9
96	Work out a land swap with the Gardeners of America to move gardens to undeveloped land at Merle Hay and Johnston Dr and then gift existing GOA land to Childserve?	0	0
97	Work out a land swap with the Gardeners of America to move gardens to undeveloped land at Merle Hay and Johnston Dr and then gift existing GOA land to Childserve?	0	0
98	We need better and/or enforces policies for nuisance yards overgrown with weeds to not being mowed.	0	0
94	Road construction projects taking much longer than anticipated needs to be chunked up into smaller projects.	0	0
95	What is the maintenance plan for the open pit stormwater retentions? While there are some plantings many have weeds and two along this road have landscaping stone pull out and sitting on the edge. Needs better management by the city if this will be future for stormwater. Will this method be used is new developments or just existing developments?	0	0
99	Annex land up to Army Corp property lines.	0	0
12	Park area In need of improvements for accessibility	0	0
82	Nice space but need to do something with the park area to make it a place people want to be.	0	0
67	Would love to have a dog park at Terra somewhere. Doesn't need to be very large.	0	0
57	Terrible design for drop off and pickup at Summit Middle School. Needs re-configuring as it completely blocks Windsor Pkwy and doesn't allow any residents to get in and out for work.	0	0
56	Needs parking for the pond!	0	0
63	The bridge and creek need upkeep.	0	0
88	Better signage on 86th for businesses that aren't visible from the street like Short E's BBQ, Doc's, UPS Store, etc.	0	0
74	Merle Hay and I-35/80 Interchange in need fo significant improvement. It is not uncommon to be stopped by lights on both sides of the bridge slowing traffic flow down.	0	0
79	A diverging/diamond interchange could be helpful. Compare to Mills Civic and I-80 interchange.	0	0
79	Bike Trail connector needed from Saylorville Lake	0	0
70	This whole strip mall is an eyesore and needs to be redeveloped.	0	0
69	Let's add some restaurants, retail, and nightlife here.	0	0
72	High speed internet for home business.	0	0
80	Bench is uprooted from ground	0	0
81	Need an entry into Johnston. Some new shopping or restaurants.	0	0
86	Park space could use more amenities and programming.	0	0
87	East Bound Speed limit should drop to 35 after the stop light. This is a residential neighborhood.	0	0
91	Stage area is a terrible design. build a real band shell for concerts.	0	0
90	Needs more family food restaurants. Pizza, Chinese, etc.	0	0
89	Please stop mowing down this area. This is a duck habitat. I mention this every year, and every year it's mowed down.	0	0
93	This intersection is DANGEROUS. Increased traffic due to urban development will not help.	0	0
40	South bound Merle Hay traffic needs a sign stating far left hand lane is turn only onto I80/35. To many people don't get it and try to make a lane under overpass.	0	0
65	Dangerous street for kids. Poor design as this has become a through street. Need stop sign at McWilliams or speed bumps on NW 97th. Could be the gradual speed HUMPS like you see at Jester Park.	0	2
66	What an absolutely gaudy look the school has taken on. Who came up with all of these wild colors for the exterior? Just because it's for kids? Why were these in your face colors allowed? Eliminate the colors on the fence on the west (looks junky), make it black. Repaint those color blocks with sophisticated colors that go with the brick.	0	5

ONLINE ENGAGEMENT - MAP COMMENTS

BARRIERS TO BIKING AND WALKING COMMENTS



ONLINE ENGAGEMENT - MAP COMMENTS

BARRIERS TO BIKING AND WALKING COMMENTS

MARKER NUMBER	COMMENT	UP VOTES	DOWN VOTES
1	Pioneer Parkway has no trails and biking on the road is dangerous.	8	0
4	Trail end, needs an extension to Dewey Park	6	0
18	We need a bike path	5	0
25	Need sidewalks along the entirety of Pioneer and Greendale (on at least one side that is) this will make it so much easier for people using the trails, people in the neighborhood, and most importantly for the Childserve staff!	5	0
8	In need of a biking crosswalk.	4	0
3	Trail dead ends and disconnect	4	0
7	Must enter the street to turn sidewalk corner.	4	0
6	Bridge washed out.	4	0
16	Want to be able to bike safely to Neal Smith Trail from northwest side of town	4	0
26	No way to safely cross the interstate as a pedestrian/cyclist	4	0
10	Connector to Dewey Park	4	0
2	NW 54th has limited trail, the school could benefit from more trail access.	3	0
5	Road appears to have a bike crossing narrowing but no trail. Adding a north-south trail here would be great	3	0
15	Sidewalk on Beaver needs to be widened to a bike trail	3	0
22	Trail does not connect to this neighborhood - have to travel on 100th (dangerous) to get to the rest of the city.	3	0
20	Trail needs more trails and is scary/unsafe to bike on as is	3	0
23	No sidewalks under I80/35.	3	0
11	Needs connector to other trails	2	0
9	Needs a connector across Merle Hay	2	0
12	Bike trails need improvement from existing gravel.	2	0
14	Very sharp corner on bike trail	2	0
21	Add trails along beaver, it is dangerous with all of the busy speeders on this road and fear of being hit by a car	2	0
17	Beaver is dangerous on a bike	2	0
19	Wide intersection feels unsafe to cross on foot	1	0
13	Limited to no sidewalks in older portions of Johnston	1	0
32	Would be nice to have a continuous sidewalk/trail here that meets up with the 62nd Ave. trail.	1	0
27	There are no paths or sidewalks here	1	0
29	Does the trail here still exist?	1	0
35	No sidewalk Crossing Merle Hat at Morningside	1	0
38	need to complete sidewalk gaps around town including on Merle Hay Rd	1	0
39	Should convert one side of Pioneer Parkway to pedestrian/biking only. This would be a major attraction that would improve community health and build social capital it would be unique to the metro.	1	0
41	Lack of cross walk makes pedestrian & bicycle crossing to Johnston Drive very dangerous at this intersection.	0	0

ONLINE ENGAGEMENT - MAP COMMENTS

BARRIERS TO BIKING AND WALKING COMMENTS

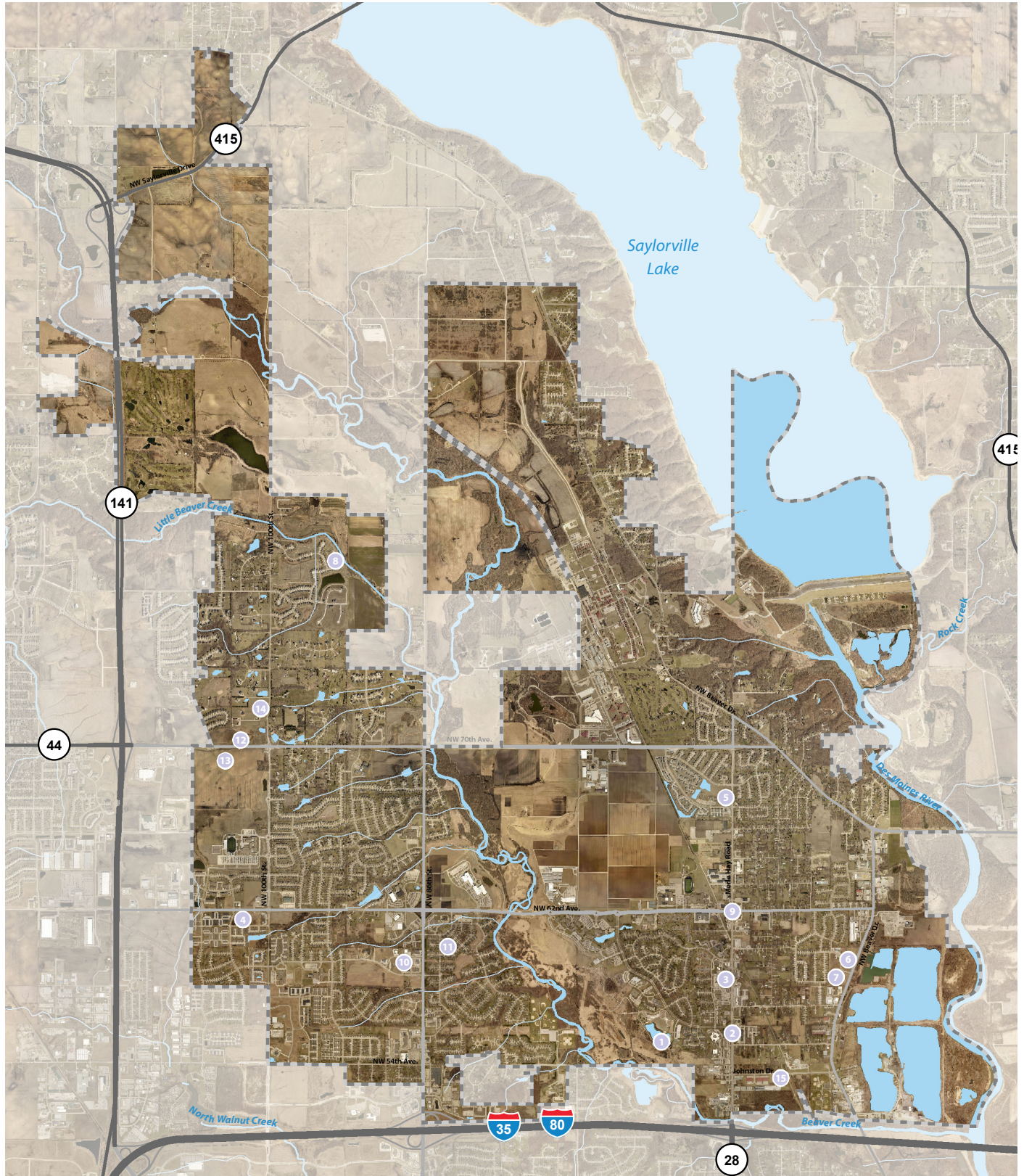
MARKER NUMBER	COMMENT	UP VOTES	DOWN VOTES
24	Even after the construction, this is constantly flooded. Also, the apartment complex drains their outdoor pool into the waterway.	0	0
28	Need a way to cross 86th St. by bike.	0	0
30	Need the sidewalks/bike trail to go all the way to 100th.	0	0
42	Need wide sidewalks / bike trail going north from 54th up to 62nd and east from 100th to 86th.	0	0
33	Sidewalk missing crossing Morningside Dr	0	0
34	No sidewalks to cross Merle Hay	0	0
37	need better pedestrian access at interchange to get north/south of interstate	0	0
36	should have sidewalk on east side of 86th	0	0
40	50 ft without a trail	0	0
31	In addition to a trail, the speed limit should be dropped to 25 or 30 mph. The curves of the parkway limit sight distance and thus safety of people walking, biking, or crossing.	0	2

ONLINE ENGAGEMENT - MAP COMMENTS

Page Intentionally Left Blank

ONLINE ENGAGEMENT - MAP COMMENTS

PLACE TO GATHER AND SOCIALIZE COMMENTS



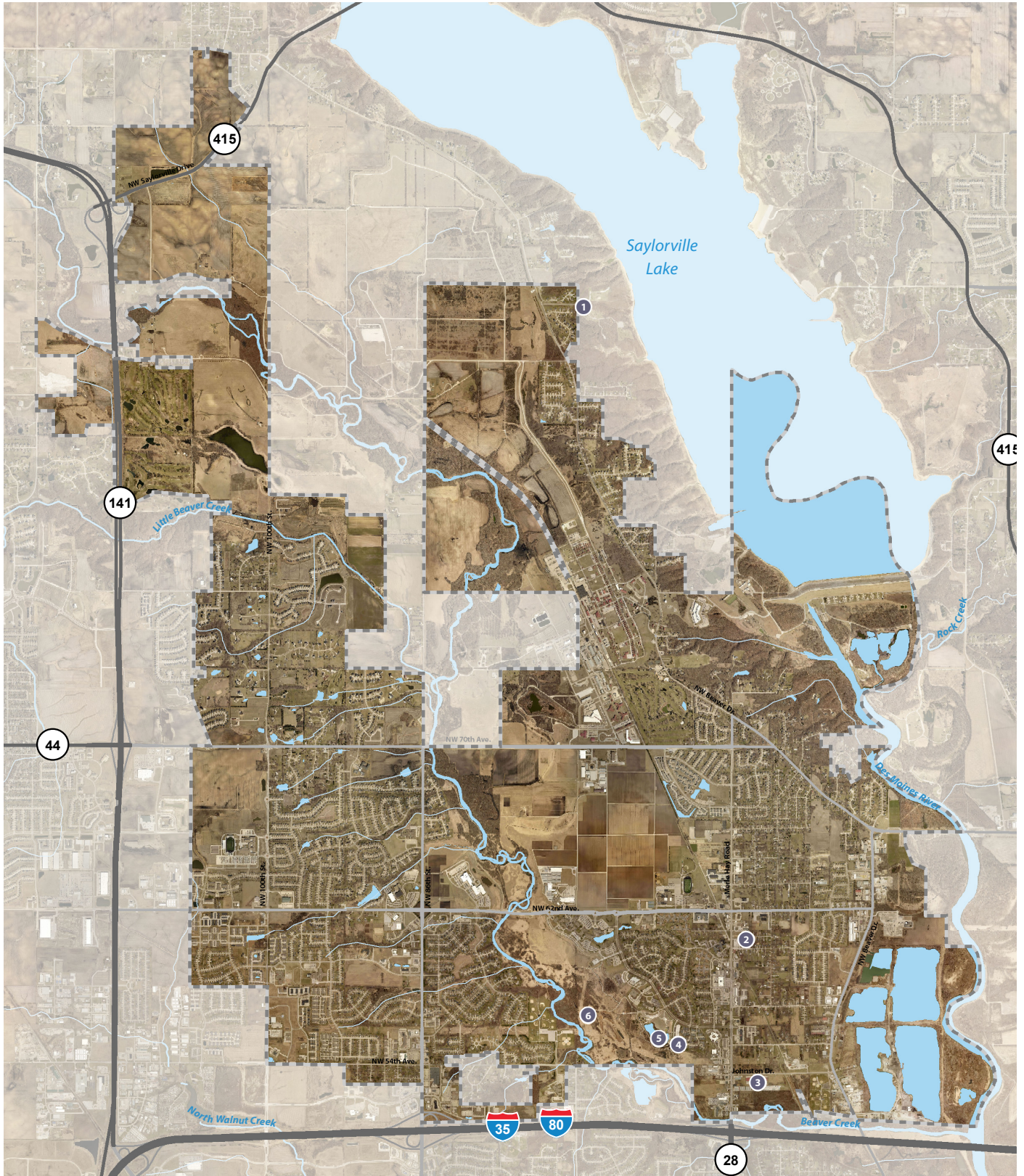
ONLINE ENGAGEMENT - MAP COMMENTS

PLACE TO GATHER AND SOCIALIZE COMMENTS

MARKER NUMBER	COMMENT	UP VOTES	DOWN VOTES
1	Terra Park is well maintained and has alternate routes (trails) in and out	8	0
9	Oversized Roundabout with water fountain or extensive landscaping and signage . Only works if oversized, slow down traffic and draw attention to town center. Simialt to D.C. circles. Maybe have a pedestrian controlled crossing to serve school crossing in high traffic.	8	1
5	the Library provides great programs for the public.	6	0
4	This would be an amazing spot for LOCAL breweries, coffee, shops. No more businesses please.	3	0
8	Great park!	2	0
7	Nice spot for little shopping center so that Johnston residents don't have to spend their money in Ankeny and WDM	2	1
6	YMCA/aquatic center	2	1
2	Sushi A GoGo, Greenbrier, El Mariachi - great LOCAL eateries	1	0
3	walk or bike and coffee? why not?	1	0
11	Need a restaurant at this busy intersection.	1	0
12	Restaurant	1	0
15	Great spot for a brewery and/or restaurant to attract traffic along the bike trails.	1	0
10	Try to entice a brewery to move to town. Always a great social gathering point.	0	0
13	Add retail and entertainment and dining facilities.	0	0
14	How about a nice park somewhere in this neighborhood? The closest one is off 107th on the Grimes side but is nothing more than a small swingset and playground -- a full-size park with a baseball field and volleyball court would be lovely.	0	0

ONLINE ENGAGEMENT - MAP COMMENTS

PLACE TO TAKE VISITORS COMMENTS



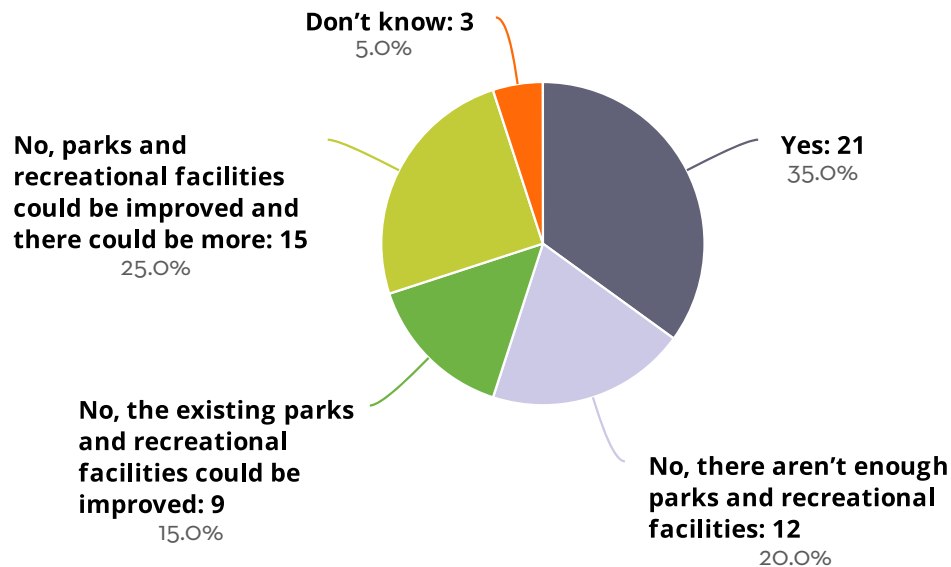
ONLINE ENGAGEMENT - MAP COMMENTS

PLACE TO TAKE VISTORS COMMENTS

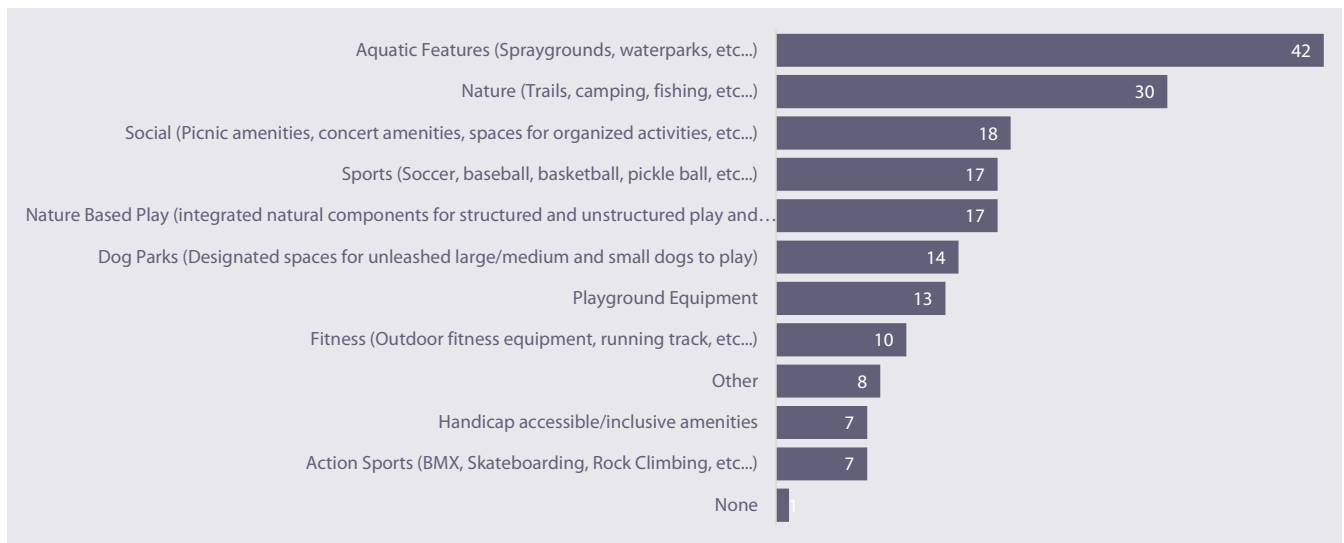
MARKER NUMBER	COMMENT	UP VOTES	DOWN VOTES
2	VanDees - a Johnston institution. Long live Van Dees!	4	0
4	We are very proud of this park / development. Great job! Please do more of this type of development.	3	0
1	Disc Golf	2	0
5	Beautiful. Great for picnics & walks	1	0
3	Love having an indoor shooting range in town.	1	5
6	visitors like greenbelt	0	0

ONLINE ENGAGEMENT - SURVEY

In general, do you feel that existing parks and recreational facilities offered by the City meet the needs of you and members of your household?



What type of park amenities would you like to see more of in Johnston? (Select all that apply)



Other:

- » Disc golf course. See also unique Centennial Lakes park in Edina that made attractive innovative use of stormwater management area for commercial business park and turned it into wonderful amenity (special miniature golf course, lawn sports courts, pedal boats, fishing, band shell, rental pavilion, restaurants, etc).
- » Fishing
- » I don't think a park is the only answer. Just park benches under a tree(s) in a small public areas would be cool. If

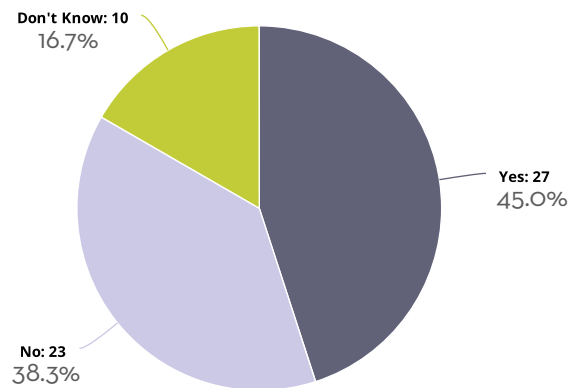
ONLINE ENGAGEMENT - SURVEY

there were dog parks perhaps there would fewer people who don't leash their dogs when walking them.

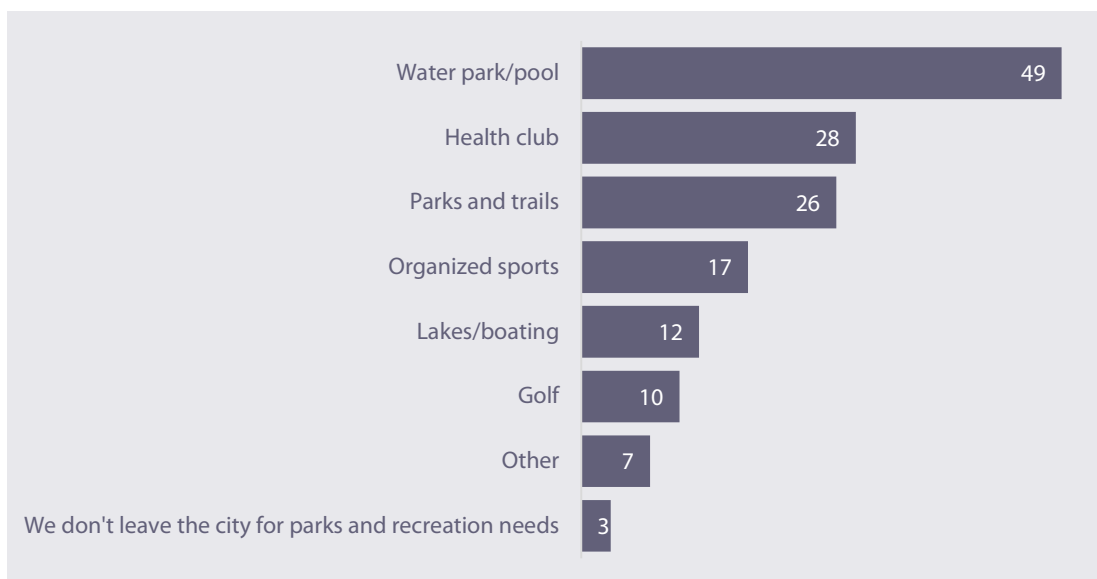
- » I'm Not a parks person
- » Integrate parks/activities with community gathering spots, restaurants, entertainment movies, bowling. Have a strategy to expand the water trails and properly fund the effort to be the leading city in metro. Integrate new parks, restaurants, or viewing platforms at rapid areas on Beaver Creek, possibly at Merle Hay Gateway area. The city need to help spur private investment. Obtain lake front or close etc. lake property for future social and recreational gatherings. People are attracted to water utilize Saylorville as much as possible. That opportunity makes us unique, exploit it!
- » I want to take advantage of Beaver Creek. Think big. Be creative.
- » I would like to see sidewalks in new residential areas in NW Johnston on 100th Street before someone gets injured or killed. And ensure they are connected to other trails through out Johnston.
- » Johnston is in dire need of a city spray ground or water play area. I drive into DesMoines every weekend in the summer and would prefer to bike or drive to something more local.
- » More trails inter connected
- » Natural areas with simple dirt walking paths but otherwise untouched by human hands. Place for deer, birds, and other wildlife to live.
- » Need a family rec center where adults can exercise but that quality youth programming can also be held. In Colorado, every suburb had a recreation center and they were always busy.
- » Our parks have the room to accommodate splash pads. Please, please include them. We desperately need an aquatic center. We could also use permanent concrete recreation features such as ping-pong tables, foosball tables, corn hole, etc. I was also just in a city that had many scooters available for public use and rent. It was really cool! People rode them to were they needed to go and left them to share. Expanded winter recreation would also add a lot, including an ice skating rink.
- » Please develop a spraygrounds feature of some kind in the next few years, before my kids are all grown up.
- » There isn't any place to put this so I'm filling this out here. The police and fire departments have been exceptional! We have had a lot of need for their services as we are seniors wil accidents and health concerns. Plus we were flooded last summer. They have provided exceptional service and have always been positive and friendly. I just wanted someone to know that. Thank you.
- » We need a community center - it could address many of the needs that were checked above
- » We need a pool and splash pad in Johnston!
- » Why doesn't Johnston have a city pool?! I really can't believe we don't! Splash pads - I hate having to leave our community for our kids to experience these two things.
- » With childserve in town it would be great to be an example of how a city should have their parks and rec be inclusive to everyone

ONLINE ENGAGEMENT - SURVEY

Does the current mix of City park and recreation programming meet the needs of your household? (i.e. organized/scheduled events, programs, sports etc.)



What types of park and recreation facilities or activities do members of your household regularly leave the City for? (Select all that apply)



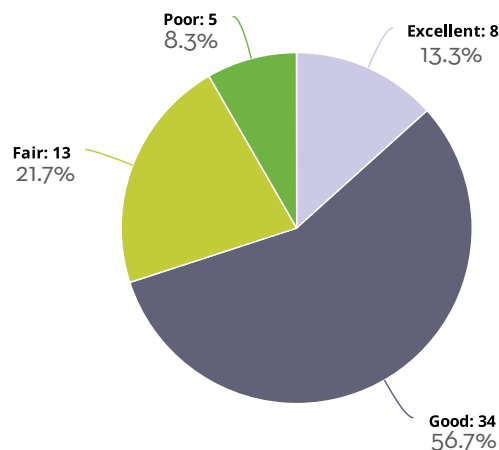
Other:

- » A nice big out door pool like the one in Ankeny. And a family fitness place like a YMCA
- » Dining, feels like we have no staple dining options in Johnston. Definitely pool/waterpark. It doesn't have to be some huge waterpark, but would be nice if there was a community pool.
- » Dog park
- » Fishing
- » Go to the Senior Center for exercise classes

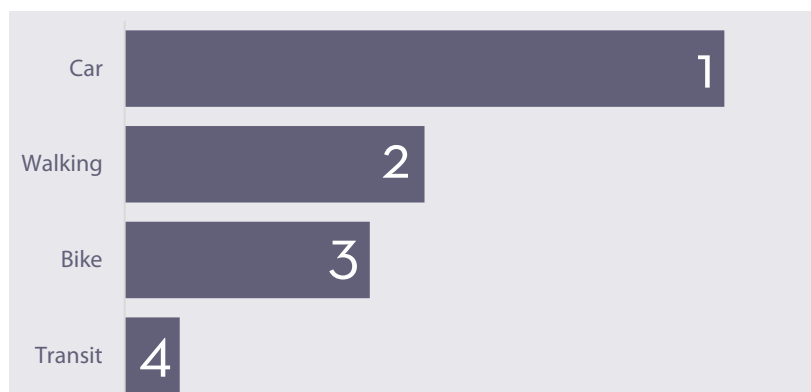
ONLINE ENGAGEMENT - SURVEY

- » I pay \$250 a month to go to Lifetime, primarily for the pool. I visit West Des Moines and the Eastern metro to use trails. I visit Des Moines to go to the splash pads.
- » I use the Des Moines metro park system for sprayground and pool options. We typically go to Grey's lake for boating options. I have not tried Terra park. It is not clear how the rental system works.
- » I would like to see a YMCA or some sort of health facility for all people in Johnston to use. It is so sad we don't a Y!!!!
- » miniature golf disc golf
- » None
- » Pools/splash pads are needed on the West side (86th Street) area.
- » We need a YMCA or similar family-oriented health club in Johnston or back in Grimes!

How would you rate the ease of getting from place to place within the City of Johnston?

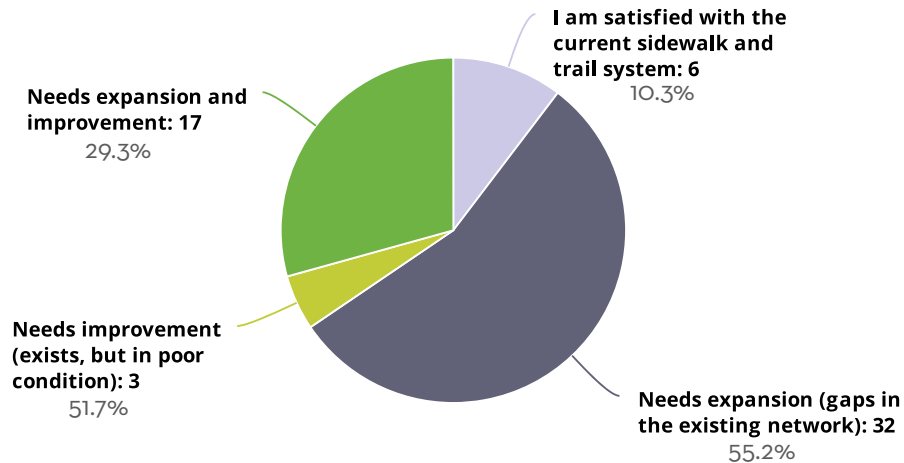


How often do you use the following modes of transportation to get to your destination? (Rank from most used to least used)

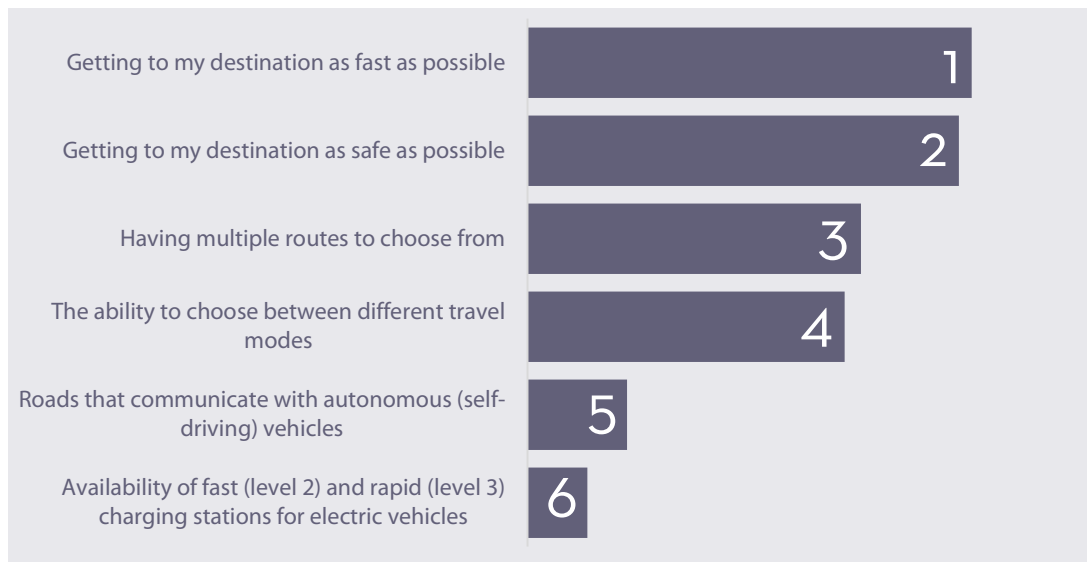


ONLINE ENGAGEMENT - SURVEY

What is your opinion of the sidewalk and trail system in Johnston?

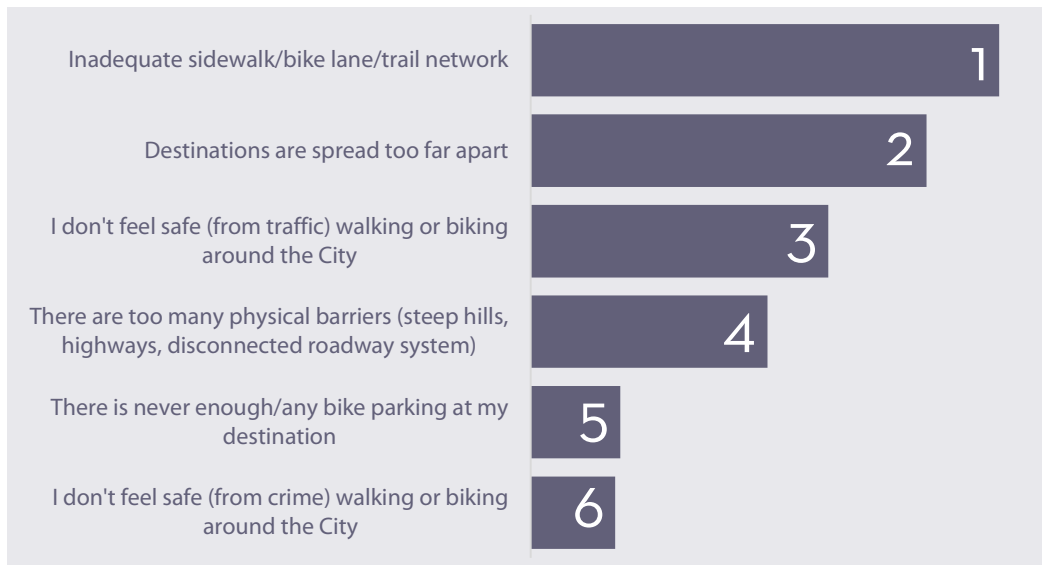


How important are each of the following to you when planning for the future transportation network? (Rank from most important to least important)

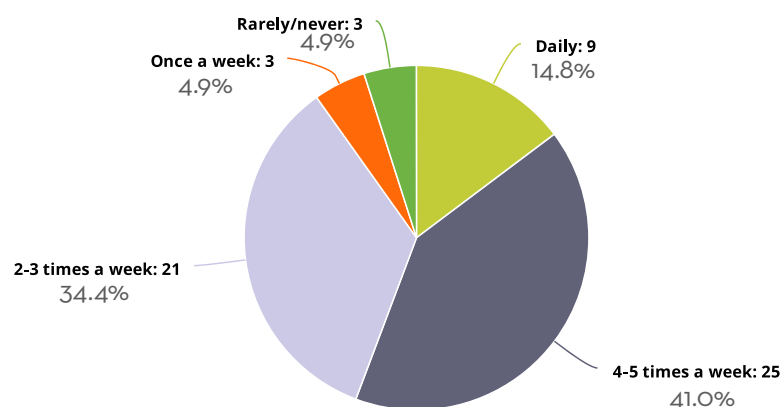


ONLINE ENGAGEMENT - SURVEY

What barriers currently exist that prevent you from walking or biking to more destinations? (Rank from greatest barrier to least greatest barrier)

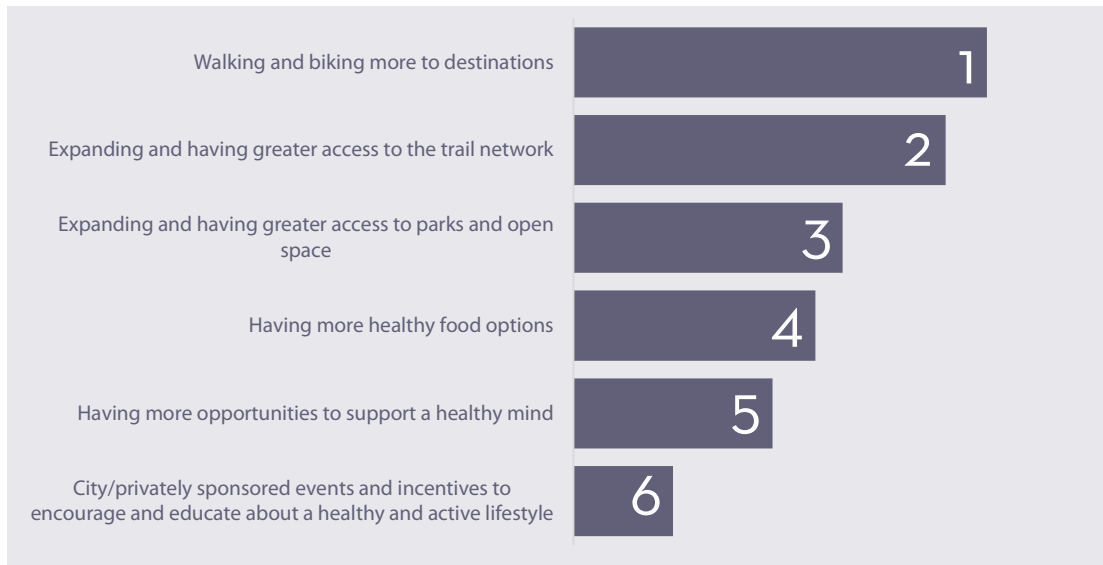


How often do you engage in at least 30 minutes of physical activity during the average week?

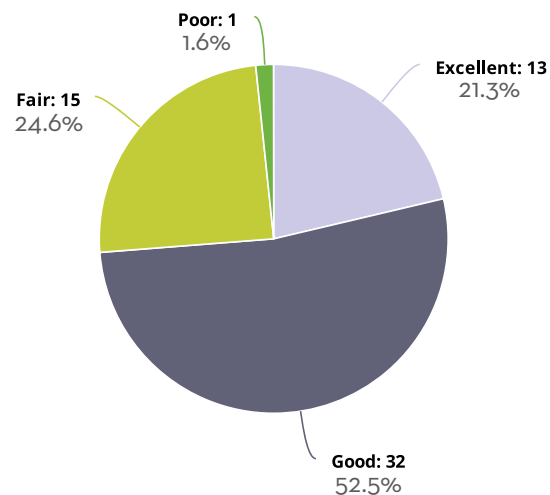


ONLINE ENGAGEMENT - SURVEY

How important do you believe each of the following are in helping you live an active and healthy lifestyle in Johnston? (Rank from most important to least important)

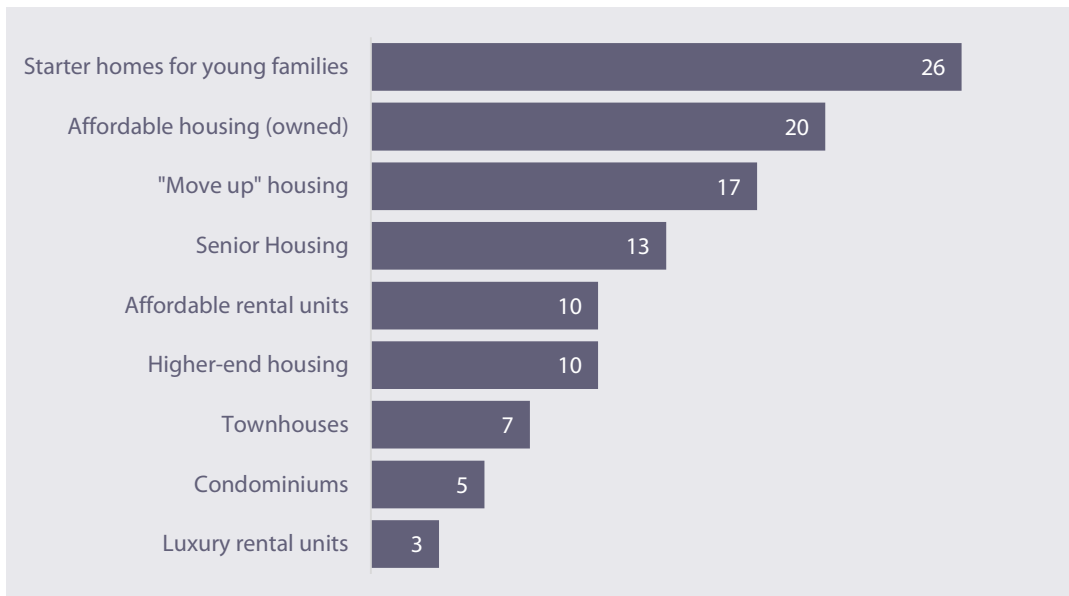


How would you rate the strength of community identity/character in Johnston?

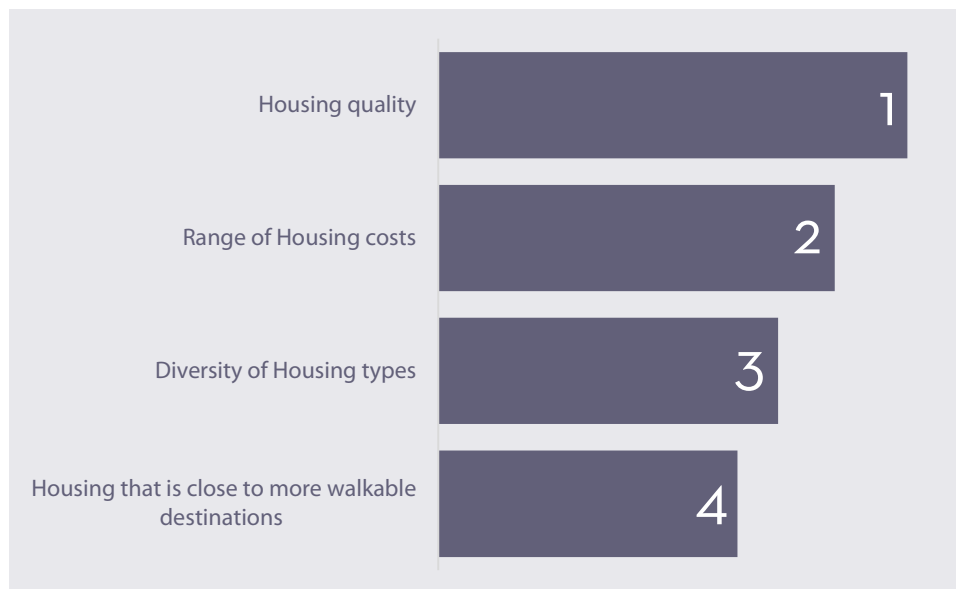


ONLINE ENGAGEMENT - SURVEY

**Which of the following housing types do you feel that there are not enough of in the city?
(Select all that apply)**

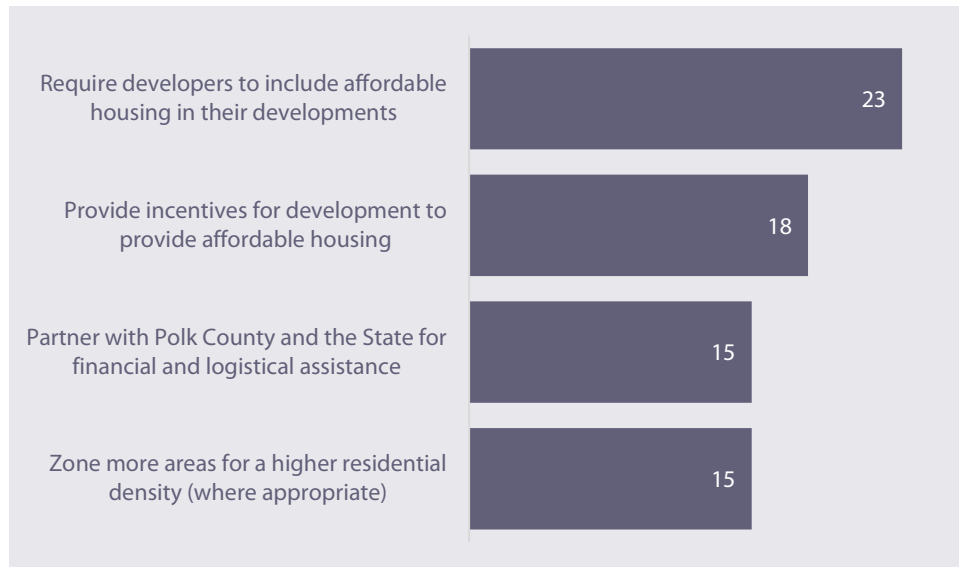


**How important are each of the following in improving/expanding housing options in the
City of Johnston? (Rank from most important to least important)**



ONLINE ENGAGEMENT - SURVEY

Which of the following should the City of Johnston engage in to meet the need for affordable housing? (Select all that apply)



Which of the following retail options in the City do you feel that there are not enough of? (Select all that apply)



Other:

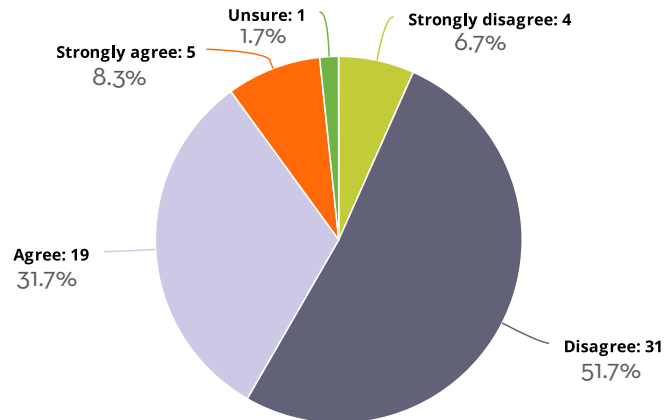
- » A target would be nice but there is one just down the street. I hate the Johnston Hy-Vee. It is much too small and never has anything I need.
- » Bakery/cafe (Ankeny doing better job with this type of restaurant)
- » Breweries, wineries, music venues

ONLINE ENGAGEMENT - SURVEY

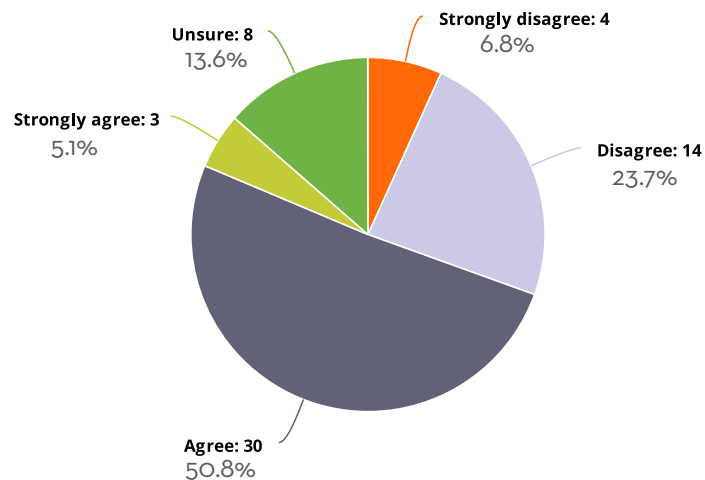
- » brewery
- » Brewery!
- » -Brewery -Community gathering place with restaurants (town center on both side of town East and West
- » Brewery, rooftop/patio restaurants
- » Could use some more unique options, e.g., specialty grocer, Thai or Indian restaurant Could use another Cozy Cafe place with a gathering room Please NO more big box stores, fast food, bars
- » Craft brewery, a cafe we can walk to
- » Fine mix now
- » I DO NOT want a big box store in Johnston. Urbandale and Grimes are close enough if I need those places. I would like nicer sit-down restaurants. We don't typically eat in Johnston. We go to Des Moines or West Des Moines if we want a nice meal. There are already enough fast food joints.
- » I wish we could attract more diversified small businesses in small shopping areas. I do not want Johnston to turn into a giant strip mall like other cities I've visited. Please maintain walkability and community in expanding businesses. I don't mind large chains, but they need to conform to our standards. We should not change for them. A natural grocery store would also be wonderful.
- » Mom and Pop individual, unique stores, like East Village in DM.
- » na
- » Neighborhood oriented business that are easily accessible to new development areas. The specific type doesn't matter, just stuff to walk to that isn't a gas station.
- » Specialty stores with unique shopping experience as part of the proposed town square plan.
- » sports equipment store
- » We need a nice upscale Italian restaurant
- » We need a sprouts, whole foods or fresh thyme.
- » We need more quality sit-down restaurants. A wider variety of fast food options would also be nice.
- » Would love to see a large Hy-Vee on the north-west side of Johnston!

ONLINE ENGAGEMENT - SURVEY

Do you believe there are enough places to gather and socialize in Johnston?

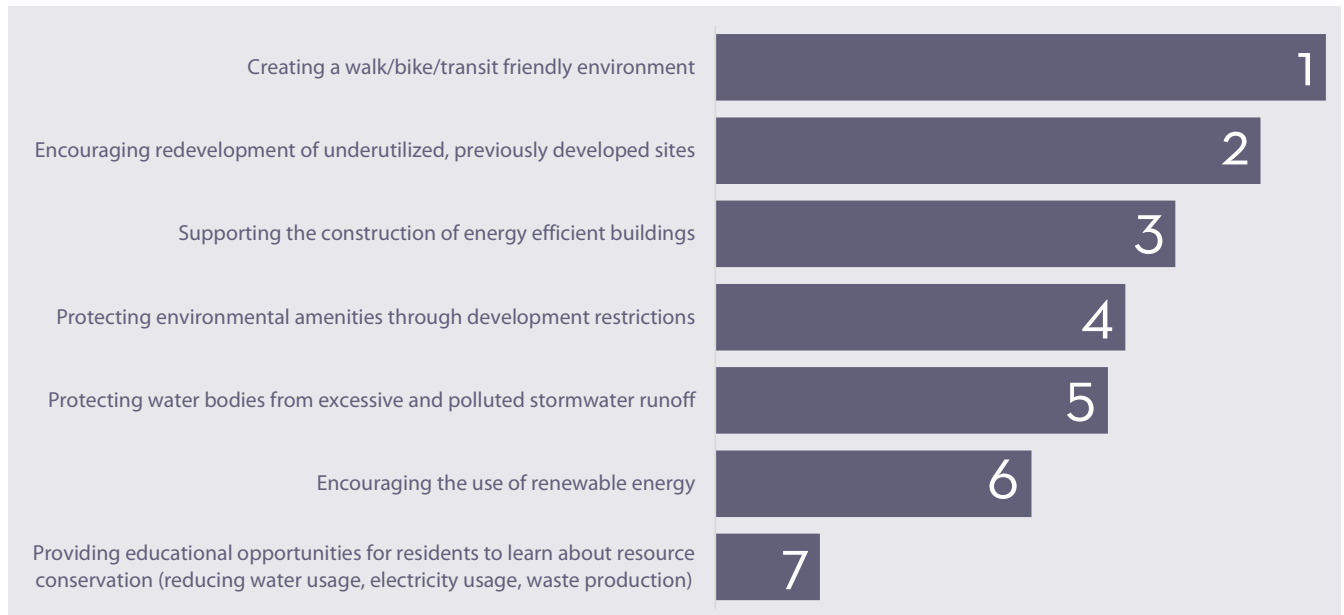


How much do you agree with the following statement? "The City of Johnston is doing enough to improve the environment."



ONLINE ENGAGEMENT - SURVEY

How important do you believe each of the following are to support a healthier environment and community resiliency? (Rank from most important to least important)



Which of the following statements about Johnston's economy do you agree with? (Select all that apply)

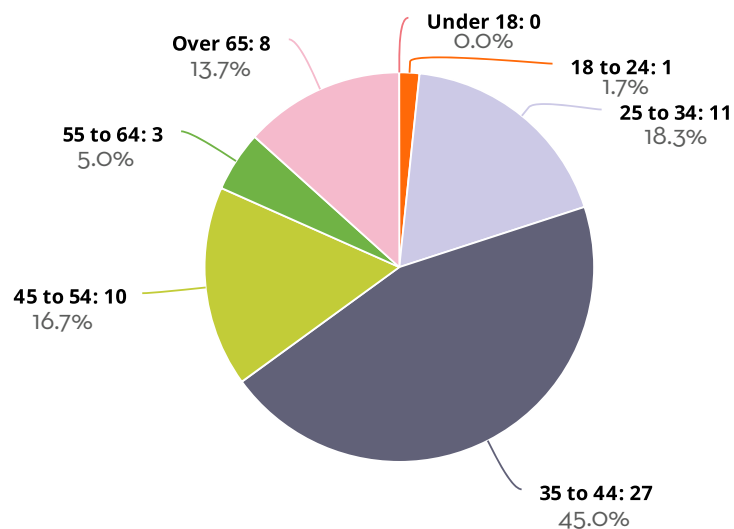


ONLINE ENGAGEMENT - SURVEY

How importantly do you value the following economic objectives? (Rank from very important to least important)

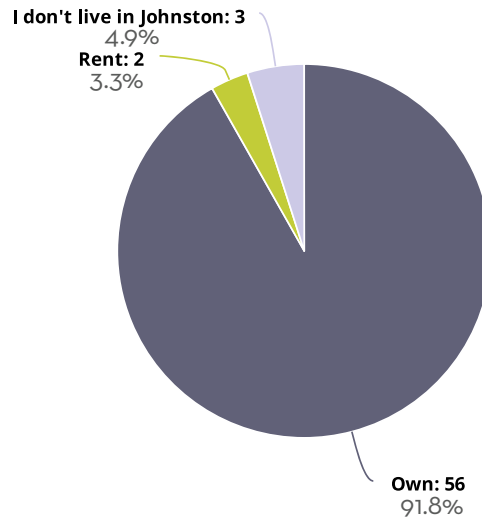


What is your age range?

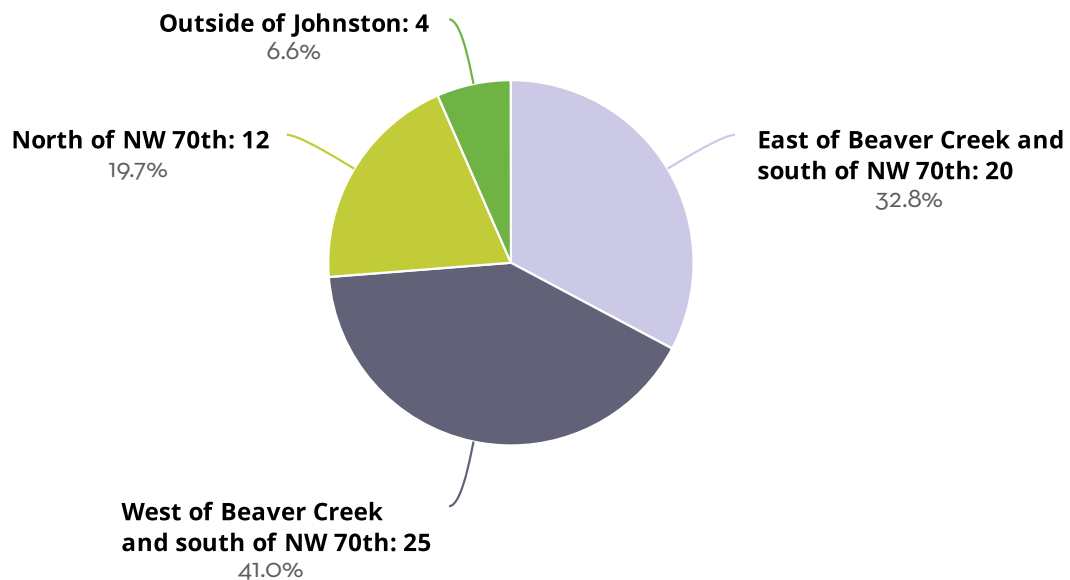


ONLINE ENGAGEMENT - SURVEY

Do you own or rent your present residence?

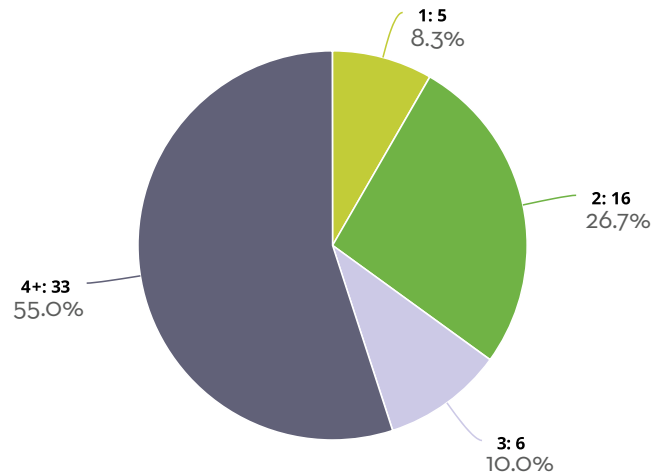


Where in the City to do you live?

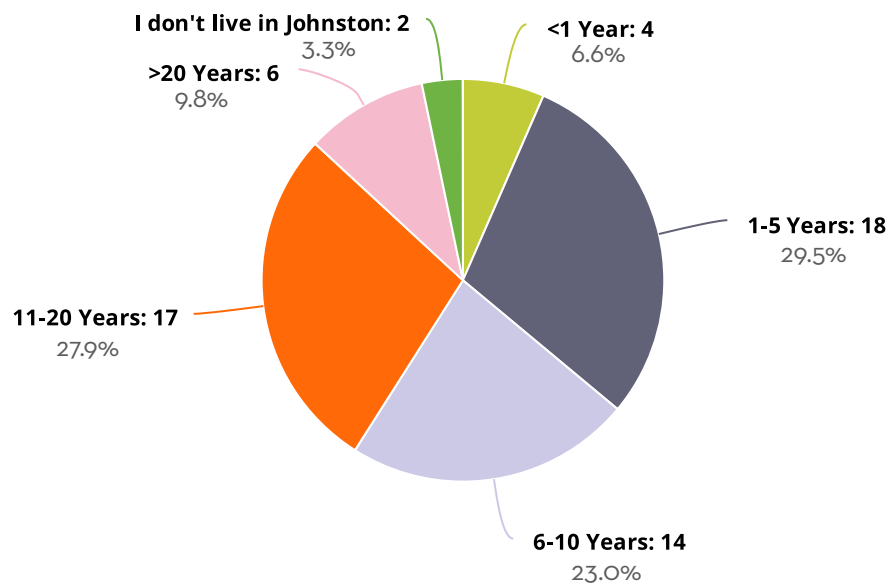


ONLINE ENGAGEMENT - SURVEY

How many people are in your household?

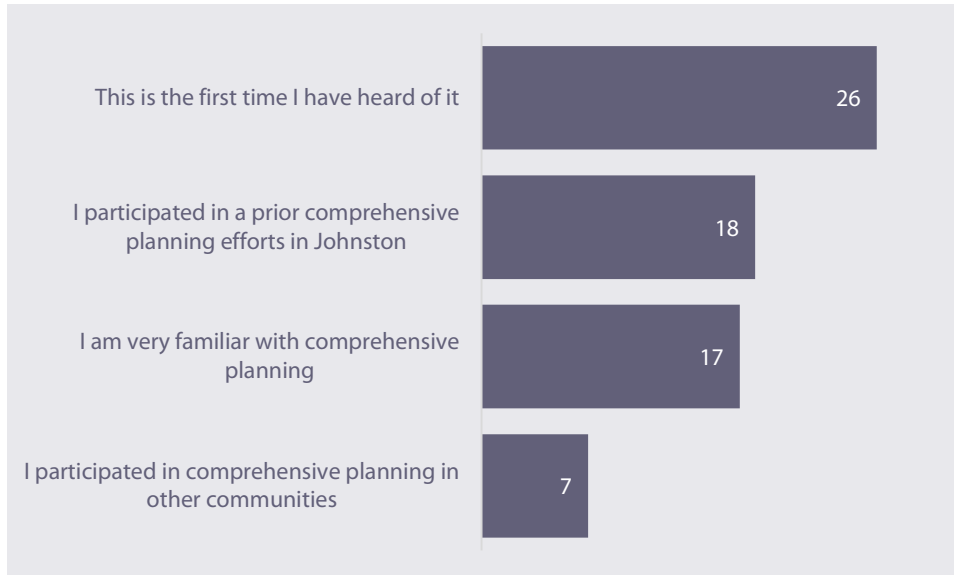


How long have you lived in Johnston?



ONLINE ENGAGEMENT - SURVEY

How familiar are you with a City Comprehensive Plan? (Select all that apply)



ROUNDTABLE DISCUSSIONS

Specific groups were targeted to learn more about key topic areas through a series of roundtable discussions. Notes from these meeting are included on the following pages.



Camp Dodge

Meeting Location: CD Conference Room – Johnston City Hall - 6221 Merle Hay Road

Meeting Time: 10:00 – 11:15

Attendance:

David Wilwerding	City of Johnston
Clayton Ender	City of Johnston
Brad Scheib	HKGi
Jesse Thornsen	HKGi

Notes

- Concerns
 - On-going viability of the training center
 - Urban development on borders
 - Do make noise and at night
 - Have received complaints, has stayed about steady
 - People can influence what the base can do
 - Ability to do anything near border is limited (no closer than 100 meters to fenceline)
 - As land uses become more dense the setback may increase
 - Is there a need for a buffer policy on adjoining private property?
 - Border up to 415 now so road helps as a barrier
 - May be worth having an official notification from the City for new homes along the border
 - Weeks mostly handguns, weekends mostly rifles
 - Do light demo training on base, but don't to heavy demo
 - Don't throw live grenades
 - Would be valuable to get a copy of the noise study
 - Current noise contour map
 - What can be done from a noise mitigation standpoint
 - Access to Camp Dodge
 - Currently through Johnston
 - Tactical vehicle entrance on south end
 - North end entrance possible within the next 20 years based on traffic and congestion (NW 110th Ct)

- Many of the drivers are training how to drive
 - Things to do in the evenings
 - Visitors not necessarily told to go to Camp Dodge, can choose to go elsewhere too, base needs to remain attractive
 - May be able to get numbers on how many occurrences hotel stay is necessary
 - Walkability from Camp Dodge to amenities in Johnston
 - Camp Dodge could consider bikes
 - Places to run in the evenings, soldiers want to do more than run the 1-mile loop on base
 - Several hundred full time employees on base who live in adjacent communities
 - Temporary assignments at Camp Dodge, need affordable places to rent, not senior level people
 - People have lived in basements
 - AGR soldier in lower ranks makes \$30-40k range
 - Could push out a survey to Camp Dodge staff
 - What would make them choose to continue to live in Johnston
- Sustainment training center
 - Generates much of the drawing force to Camp Dodge
 - Full report available of the economic impact of Camp Dodge
 - Annual numbers on throughput (used to get money from feds)
- Camp Dodge is always competing to get people here, competes with
 - Camp Ripley (MN)
 - Fort McCoy (WI)
 - Camp Atterbury (IN)
 - Camp Guernsey (WY)
- New north acquisition area may be used as prairie ground
 - Training range development master plan
 - Potential for buildings, north cantonment area
 - Potential for dirt vehicle driving track
 - Potential for joint paved vehicle training track (partner with IDOT?)
 - Potential for surveillance training area
 - Potential for city auxiliary facility (police, fire, public works) on Camp property
- Red Bull Drop Zone
 - Mainly used by Chinook helicopters for parachute training
 - Is there a need for building design considerations to maintain viability of this asset?
- Camp Dodge open to public with drivers license
 - Gold Start Military museum
 - Public events held at Camp Dodge
 - Concert series
 - Trench Run, various runs
 - Can use Chapel?
 - Boy Scout use facilities
 - Pool pavilion, use to have a large pool
 - Large assembly halls and open areas

- Leadership reaction course available to groups
- Family support activities for families with members overseas
- Army compatible use buffer program
 - Soccer fields in buffer lands?
 - Access federal funds to help preserve compatible land uses along the border
 - Can provide matching funds to purchase property or encumber property
 - Could partner with Iowa Natural Heritage foundation to purchase natural conservation easements
 - Have not moved forward
 - Could write a strategy in the comp plan to get a community center in buffer area
 - Mostly case by case, what leadership views as compatible
 - Daytime business uses are more compatible than residential
- On the south may see an open field for the Army Combat Fitness test
 - May be enclosed
 - Standards for fitness testing changing
 - Wellness center only open to employees and current and former military
 - Could be a way to attract retired veterans to Johnston
 - Culture of fitness is changing
 - Trails, water trails help in staying fit
- Possibility of National Guard sponsoring an ninja warrior agility course open to public

Chamber of Commerce Board

Meeting Location: Training Room – Johnston City Hall - 6221 Merle Hay Road, Johnston, IA 50131

Meeting Time: 11:30 - 1:00

Attendance:

David Wilwerding	City of Johnston
Clayton Ender	City of Johnston
Brad Scheib	HKGi
Jesse Thorsen	HKGi
Tim Rourk	Keeling Wealth Advisors
Shane Goodman	Big Green Umbrella Media
Bruce Amendt	Johnston Community Schools
Brian Hilgenberg	Bishop Drumm
Shanm Busler	Charter Bank
Stephanie Van Veldhuizen	Stanbrough Realty
Callie Kramer	John Deere
Heather Goodwin	Johnston Chamber
Gray A. Freese	Iowa National Guard

Notes

- Crime
 - Problem with apartments being correlated with crime
 - Where is serious crime occurring?
- Question: Is the city about as big it can get now (boundary wise) to provide adequate services?
 - Answer: Can mostly service what is shown in the planned area
- Issue
 - Fairly rapid increase in student demographics
 - 64 different languages
 - Need for cultural learning
 - Different park needs
 - Cultural diversity
 - Economic diversity
- Neighborhood Diversity
 - New residents moving into vacant housing in older/existing neighborhoods
- Pool Discussion
 - 13 yrs ago bond issued, did not pass
 - With Grimes
 - Wants kids to be able to ride bike to the pool
 - Why can't they do that in Johnston
 - May need a safer way to get there (crossing busy roads)
 - Geography issue, needs to be close to my home

- Small business
 - Chamber trying to promote
 - Closing businesses just say people not coming in
- Grub hub and Uber Eats have hurt restaurants
- John Deere new tech building
 - Food trucks, scooters, other things to attract silicon valley workers
- Processing food trucks
 - Allowed on private property
 - Currently looking at relooking
- Not a big draw for people to come to Johnston
 - “Pass thru town in a fly over state”
- Hidden Gems
 - Trail system (though disconnected)
 - Trestle Bridge
 - Johnston Dr.
 - Away from things
 - Water trail system
- Growth in Chamber
 - Independent restaurants
 - Senior facilities
 - Banks
 - Health services
- Concern that big box retailers may not be here to draw people in
 - Big empty stores
- Breweries
 - Hip + cool today, but what about in the future?
 - Subject to state regulations

Corp of Engineers

Meeting Location: CD Conference Room – Johnston City Hall - 6221 Merle Hay Road

Meeting Time: 1:00 – 2:15

Attendance:

David Wilwerding	City of Johnston
Clayton Ender	City of Johnston
Brad Scheib	HKGi
Jesse Thornsen	HKGi

Notes

- Corps has completed a master plan in 2015
 - Was a 1-1.5 year process
 - 20-30 year plan
 - Won't see much more new development of parks, mostly maintenance of existing
 - Need to protect park from urban sprawl, review plats and stormwater
 - Recognizing will have more visitors in the future
 - Education center potential at walnut ridge
- Operations and management plan for next 5 yrs
 - Potential cabins in acorn valley campground
- West trail closed for over 15 yrs due to constant flooding
 - Could have short sections opened but full trail is not feasible
 - In master plan
 - Groups such as Central Iowa Trails and a mountain biking group interested in supporting
- Want to get people out to the low density rec areas
 - trails are fine, no development
- Urban Wildlife Refuge (13 in Country)
 - Partnership
 - Polk County Conservation
 - US Corps
 - Des Moines
 - Fish and Wildlife
 - Expose kids from city to US Fish and Wildlife
 - Outdoor classroom
 - Staff from US Fish and Wildlife
 - New signage coming
 - Continue to have public hunting

- Protect from development and transportation corridors
- Corps would like to see a paved trail across the dam
- Bob Shetler Rec area
 - Archery range just broke ground
 - Partnership with city possible
- No plans to further acquire land
- Gravel company to pull out eventually from ponds
- Ankeny Outfitter (Jester Park)
- 2.1 million visitors a year
 - Up from 1.2 million in 2012
 - Campgrounds
 - Trial-use
 - Picnic use – diverse demographic
- Will send master plan and visitor data
- May need to Adjust Army Corps Boundary in our mapping

Faith Based Community and Johnston Partnership for a Healthy Community

Meeting Location: CD Conference Room – Johnston City Hall - 6221 Merle Hay Road

Meeting Time: 10:00 – 11:30

Attendance:

David Wilwerding	City of Johnston
Clayton Ender	City of Johnston
Brad Scheib	HKGi
Jesse Thorsen	HKGi
Tim Beatrick	First Baptist
Craig Ferguson	Johnston River of Life
Jonathan Craig	Bridge (Meredith Drive)
Bill Bernau	St James
Chris Wilson	Johnston Partnership
Lilian Gallo Seagren	
John Rains	
Bill O'Connell	St Paul Presbyterian

Notes

- Community Center Idea
 - Valley Church community center
 - Has become a West Des Moines community center
 - Would the city consider working with faith communities to open a community center?
 - Aspects
 - Adult Education
 - Getting together for a purpose (classes)
 - Expansion space for the library
 - Recreation component
 - Accessibility, needs to be accessible by foot
 - A crossover space for changing demographics
 - Affordable sports and rec programming (expanded on parks and rec dept)
 - Place to showcase what people do
 - Sewing, makerspace
 - Entrepreneurship
 - Council open to collaboration to help build up existing efforts to eventually turn into a brick and mortar idea
 - Try not to duplicate efforts
 - Would need to include space for social service offices and programming, not just the “fun” things

- Programming for special needs
 - Maybe a policy discussion for parks, etc.
- Need for Affordable Housing
 - Rising senior population
 - More affordable senior housing
- Social Service Programs
 - Compare to West Des Moines Human Service
 - Problems having people access services
 - What is provided is not accessible (Red Rock in Ankeny)
 - Community may believe there are no poor people in Johnston
 - Partnership may need support sharing that information in a transparent way
 - 23% of kids in Johnston School District receive free and reduced lunch
 - Was 3% 10+ years ago
 - 75% of calls received for assistance are for rent or utility assistance
 - People calling everywhere until they get a yes
 - Usually fulfill request or refer to other services
 - Plan could help offer a way to help social services to network
 - 3rd Thursday at Noon
- Police department has done a good job of outreach to diverse populations
 - Taking care of people in crisis
- What if police chief or library director goes away?
 - Doing such a good job now with programming
 - Need to continue programs and outreach
 - Plan could identify strategies in depts. That should continue
- How does the city better promote the things that are going on?
- Balance between increasing diversity and people's concern of high density development
- If you are coming to the community to work at Pioneer your acceptance level is different than coming in as a refugee
 - Need to be able to welcome everyone equally
 - Refugees may not participate because they may not feel like they are welcome
 - Refugees may be placed, not choosing where to live?
- How to reach out to refugee and immigrant population?
 - Special session
 - Boaz Mc.. Congolese
 - Accessibility big deal
 - Groups
 - Congolese (want to integrate)
 - Burmese (isolate? Maintain culture)
 - Liberian
 - Syrian
 - Zion
 - Library and barn feels safe
 - Sikh Temple and Mosque

Johnston Economic Development Corporation

Meeting Location: Training Room – Johnston City Hall - 6221 Merle Hay Road, Johnston, IA 50131

Meeting Time: 11:30 – 1:00

Attendance:

David Wilwerding	City of Johnston
Clayton Ender	City of Johnston
Adam Plagge	City of Johnston
Brad Scheib	HKGi
Jesse Thorsen	HKGi
Heidi Whitver	HR Green, Inc.
Tim Herlt	Charter Bank
Matt Morris	Charter Bank
Zach Carlton	Bank Iowa
Dean Whitaker	FNB
Nick Halfhill	
Jason Kerndt	Vision Bank
Phil Dunshee	JEDCO
Todd Kielkopf	Nest Park Owners Assoc.
Jeff Segin	
Brian Vahle	
Steve Scott	
Grant Taylor	
Yuyang Jin	
Dorrance L. Brezina	
Steve Peglow	
Al May	
Kelley Frary	
Harley Thornton	
Andy Vis	
Jordan Kleinschmidt	

Notes

- Why do businesses choose to locate in Johnston?
 - Higher household income/Demographics/ education attainment
 - Traffic/access from I-80, Hwy 141
 - Available real-estate
 - Schools
 - Community Amenities (Trails, Parks, natural resources, etc)
 - Camp Dodge
 - Spinoffs of Larger businesses
- Why do businesses leave Johnston?
 - Lack of diversity, harder to recruit talent
 - Cost, cheaper other places to do business

- Can't expand in current spot
 - Perception of lack of city incentives, perception others will offer more
- Economic Development has been an emphasis in Johnston for Decades?
 - How has the approach to Economic Development Changed?
 - Paid staff and closer collab
 - Going after smaller as well
 - Infrastructure investments in older areas
 - Competition with neighboring cities, incentives, also global outlook
 - Transportation access more important today
 - Greater appetite for risk today for right development
 - Look out 10-20 years from today...how should the approach to ED change?
 - More intensive development pattern in general
 - Who will the new users be?
 - Greater emphasis on redevelopment
 - More affordable housing needed support future workforce
 - Recreation will play a greater role
 - Staying current with tech
 - Educational factor as part of economic development
 - Understand what the comp plan is
- What emerging trends do you think have the greatest potential to impact Johnston.
 - Corteva Land to stay
 - Cowork Space
 - 5G Network
 - Diversity and Immigration
 - Deliveries for foods and goods
 - Need for less space
 - Camp Dodge growth

Notes Gathered from Tables

- Come-Why do businesses come?
 - Traffic, I-80/35 Access
 - Population growth
 - Quality of life/schools
 - Geography
- Leave-Why do they leave?
 - Ability to attract talent
 - Amenities and neighbors
 - Attrition
 - Construction cost
 - Cost in general
 - Land availability
- Economic Development Changed?
 - Competition with neighbor cities
 - National outlook

- How should it change?
 - Paradigm shifts/users
 - Type of development
 - Small users vs only large
- How has approach to development changed?
 - Access to has become more limited
 - Regulatory/city approach has become more development savvy-collaboration
 - Clearly did not understand importance of transportation access
 - Not just based on “pioneer” needs anymore
 - City willing to take “investment” risk
- How should it change in the future?
 - Median age change downward will have an impact
 - Demand for affordable starter housing will be greater
 - Even greater need for redevelopment
 - Access to technology will become even more important
- Why do businesses leave Johnston?
 - Lack of diversity-harder to recruit talent
 - Lack of the “right” land available or green space
 - Access to paired workforce in an area to support certain...
- Why locate in Johnston?
 - Quality of education system
 - High level of education attainment, favorable demographics
 - Higher household income
 - 141 Access-transportation availability of land for development-NW Polk County face same workforce challenge as metro
 - Consistency with neighboring community-not a barrier to development
- Why do businesses choose to come to Johnston?
 - Accessibility-location
 - Available building sites, higher household income/education
 - Four interchanges
- Why do businesses choose to leave Johnston?
 - Too small
 - Another neighboring community with smaller growth (i.e. Urbandale, Atlanta)
 - Negative review from inspections
 - Availability for expansion (few industrial)
- Economic development has been an emphasis in Johnston for decades?
 - More marketing of these surveys
 - Online feedback form community members/ transparency in anonymity
 - Engagement with small businesses
 - Cooperation between developers and city
- Businesses Locate in Johnston
 - Higher than average median income
 - Proximity to personal residence/owners
 - Proximity to Interstate

- Demographics-education
 - Live/work/play- trails and golf, coffee, fitness (community amenities)
 - Synergy with Pioneer and John Deere
 - Camp Dodge
- Why do people leave Johnston?
 - Lack of office space-purchase property
 - Location-proximity of rest of city
 - Perception of lack of incentives to businesses wanting ground up construction
(Perception is Reality)
- Economic development has been an emphasis, how has it changed?
 - Merle Hay road plans-slow to take off
 - Parks and Recreation
 - Dedicated development stuff (public-private corporation)
 - Look out 10 to 20 years...
 - Johnston needs to incentivize High Density growth and development, both apartments and office
 - Places that offer experiences

Agencies and Jurisdictions

Meeting Location: Training Room – Johnston City Hall - 6221 Merle Hay Road, Johnston, IA 50131

Meeting Time: 8:30 – 10

Attendance:

David Wilwerding	City of Johnston
Clayton Ender	City of Johnston
Brad Scheib	HKGi
Jesse Thornsen	HKGi
Dylan Mullenix	DMAMPO
Todd Ashby	DMAMPO
Lauren Johnson	PCHTF
Eric Burmeister	PCHTF
Alex Pfaltzgraff	City of Grimes
Amanda Wanke	DART

Notes

- Maybe we should be centering the housing discussion around jobs
 - If somebody works in Johnston, should they be able to find a place that they can afford to live?
 - Housing to jobs ratio
 - What is the demographic of the workforce that is being imported in?
 - Workforce housing study report
 - 20 years to accommodate new population Johnston would need to add about 260 new rental units to Less than \$25k households
 - 660 units \$25-50k
 - 425 new ownership affordable 50-75k
 - Virginia Tech
 - Capital Crossroads
 - Indicates that 75% of the incoming population will make less than \$75k/year
- Barriers to more affordable housing (Polk County Housing Trust)
 - Community character plans
 - Zoning ordinances
 - Transportation issues
- Transportation (MPO and DART)
 - Much of the transit network today is a legacy network, an overhaul of the entire network may be needed
 - Focusing on multi-modal
 - MPO is in maintenance mode not expansion mode
 - East/West transit connections wanted, but not as efficient

- Mobility On demand transit services may help
 - Collaborating with taxis, uber, etc.. to bring riders to existing Dart routes
 - Was a way to replace an underperforming route
 - Service exists in Urbandale
 - Ridership Trends on Johnston Routes
 - 93 – extending further west into Grimes in the fall
 - 5 – ridership is growing slowly, HD housing and senior housing helping
 - MPO willing to help out with scenario planning
- Need to recognize that the new growth that is coming is not necessarily the same growth that has happened in the past
 - All cities will be competing for 25% of the more affluent growth
 - If city really does want to grow, need to cater to the other 75%
- Grimes
 - NW growth, lack of an annexation agreement
 - Utility interconnects
 - Grimes sewer treatment at capacity
 - Going west with expansion line
 - Just updated comp plan last year
 - 280 units financed with tax credit last 4 years
 - Small lot development Destiny doing well
- Accessory Dwelling Units
 - Not much being done
 - Clive could consider
- Des Moines may end up with an inclusionary housing policy in the next few years
- Missing Middle Housing
 - Development community not necessarily ready
 - Sherman Hill Area
 - Looks like large houses, but split into 4 condos
 - New housing
- Household travel survey
 - May be able to get Johnston specific
- Rider survey
 - Can break it down by route and zip code
- Non-rider survey
 - Can break it down by community
- Des Moines has done a return on value analysis
- Trails data from the MPO
- Policies to consider
 - Adaptive traffic signals
 - Smart streets policy

Johnston Community School District

Meeting Location: JCSD Board Room

Meeting Time: 2:30 - 4

Attendance:

David Wilwerding	City of Johnston
Clayton Ender	City of Johnston
Brad Scheib	HKGi
Jesse Thorsen	HKGi

Notes

- Issues
 - Lack of public transportation, needs to go East and West
 - Lack of citywide internet
 - Creation of lower cost single-family housing
 - More, wider selection of shopping, restaurant, bars amenities*(Bedroom Community)
 - Community understanding of diversity and celebrating it*
 - Lack of and gaps in the sidewalk and trail network
 - Lack of kids activities like splashpads
 - Pickleball courts
 - Water quality, surface and drinking water
- Ideas
 - Offering citywide internet
 - 3rd party to have subscription based internet
 - Fiber
 - One vendor through Johnston to provide to all households
 - More Amenities
 - Prairie Trail model in Ankeny
 - Small business, restaurants, waterpark, splashpads
 - Waukee
 - Make sure to look at different demographics
 - Ages
 - Diverse restaurants
 - Accessible
 - Town Center Amenities

- All ages
 - Venice or Riverwalk... water related draw
 - Public transportation provide via ground and water
 - Build off of the water trail
- Community understanding of diversity
 - Grassroots movement
 - Become friends with the people next to you
 - Block parties with combined neighborhoods, not just the block
 - Can't get diversity in programs if where the programs are held aren't accessible to those without cars
 - Art based, sculptures, paintings
 - Cultural pieces to events that are already going on
- How to engage students?
 - School to work programs
 - Service learning
 - Educating teachers
 - Externships for teachers
 - Menu to hand out
 - Student Council
 - Go to the lunchrooms
 - Clubs have an interest
 - Scouts
 - Elementary
 - Summer programs

Notes Gathered from Tables

- Issues
 - Transportation-public, east and west needed
 - Sidewalks-less busing for schools with completed sidewalks-savings for schools
 - More eateries-keep money locally
 - School enrollment decreased-why
 - Community-understanding of diversity
- Community Understanding of Diversity
 - Celebrate art (paintings/sculptures) of ethnic groups living in the community
 - Expand Green Days-cultural bands, food trucks
 - Newspaper-highlight news at established...
 - Space to have people gather-in town-park with fountains
 - Block Party-must invite another block that is different
 - Provide announcements in different languages
 - Children Sports-scholarships, help with transportation
 - Youth activities that support each other
 - How do we unify community- east and west
 - Feeder programs to sports-unify programs, ask what they want: competitive high cost etc.

- Handicapping opportunity in parks
- Issues
 - Multipurpose housing creating more police calls
 - Lack of shopping, restaurants
 - Kids activities-splash pads
 - Water quality
 - Socio economics-social/language barriers
 - Keep up with the changes – be more proactive
 - Services need to expand with need
- Task
 - Copy Prairie Trail model in Ankeny
 - Tax abatement/business grants, entice businesses to come
 - Splash Pads/Water Park
- Issues
 - Sidewalks and trails
 - Lack of restaurants and bars
 - Lack of Town Center (events...)
- Town Center- like Venice/Riverwalk
 - Include things for adults and kids
 - Splash Park type
 - Top Golf
 - Located not directly in center but more on outer edge
 - Trolley system
 - Feed off water trail system
 - Water Park-Splash Pad
 - Farmers Market included

Johnston / Polk County Senior Center – Crown Point – 6300 Pioneer Parkway

Meeting Location: Crown Point – 6300 Pioneer Parkway

Meeting Time: 1:30 – 3

Attendance:

David Wilwerding	City of Johnston
Clayton Ender	City of Johnston
Brad Scheib	HKGi
Jesse Thornsen	HKGi

Notes

- A lot of people can't get to work on the weekend because the bus doesn't operate on the weekends, limits the type of people that can live in Johnston
- Caring Corps or Polk County Ride Services
 - Set up for people that need rides to places
 - In Urbandale and Grimes
 - Free service dependent on volunteers
 - Coordinator coordinates everything
 - Grimes Community Connection
 - Problems with insurance
- Saylorville Spillway
 - People continuing to lose things in floods
 - Can be a very diverse group
 - Nice to watch other people do their thing
 - Helps with mental health
- Enjoy Johnston being a little out of the way
- Concerns for traffic from Town Center Development
 - Trying to address traffic issues directly
 - Idea for a pedestrian crossing phase all-way
- Feel safe in Johnston
 - Has a little bit of everyone
 - Most favorite place is library, offers a lot for lots of family members, also cheap entertainment
 - Senior center important in connecting people together

- Community Center
 - Would need a high-tech area
 - Safehaven for children from other countries
 - Need rec component
- Senior center
 - needs more volunteers
 - Need closed in overlook of the lake
 - Friendly staff makes a big difference
 - Kids want their parents to come for own health
 - No computer available to people visiting
 - No wifi available either
 - Technically a part-time center, not full time center according to Polk County
 - Lunch count would need to be higher
- Other Retreat places
 - Library
 - Spillway
- Seniors could be a part explanation for smaller household sizes and decrease in median household income