

ITEM NO. 7U



OFFICE OF THE CITY ADMINISTRATOR

Johnston, Iowa
AGENDA COMMUNICATION
September 2, 2014

SUBJECT:

Consider approval of the Construction Plans for the Crosshaven Plats 4 and 5, Resolution 14-208.

ACTION REQUIRED:

- Ordinance
- Resolution *DeW*
- Approval
- Receive/File
- Attorney Review

SYNOPSIS:

The applicants, Hubbell Realty Company, wish to construct the next phases of the Crosshaven subdivision and have prepared the attached construction plans which are in conformance with the approved Preliminary Plat for the property. Foth Infrastructure and Environment and City Staff have reviewed the construction plans and found them to be in conformance with the Statewide Urban Standards and Specifications (SUDAS) and City Supplemental Specifications.

FISCAL IMPACT:

The City would assume maintenance upon acceptance of the improvements and expiration of the 4-year maintenance bond.

RECOMMENDATION:

Staff recommends approval of Resolution 14-208.

Motion by _____, seconded by _____ to adopt Resolution No. 14-208: A RESOLUTION APPROVING CONSTRUCTION PLANS FOR CROSSHAVEN PLATS 4 AND 5.

Attachments: Grading Plan, prepared by McClure Engineering, dated August 19, 2014;

NOTICE
McClure Engineering Company reserves any and all responsibility and liability for conditions which may have been hidden or better known than those shown hereon, and the engineering firm has no responsibility for conditions which may have been better known than those shown hereon. The engineer's professional seal is required by law to be placed on all drawings.

COPYRIGHT
Copyright and property rights in these documents are reserved by McClure Engineering Company. No reproduction, storage, or system or any means shall be made without obtaining prior written consent from McClure Engineering Company.

GRADING & EROSION CONTROL PLAN



CROSSHAVEN PLAT 4

JOHNSTON, IA
226053
SEPTEMBER, 2013

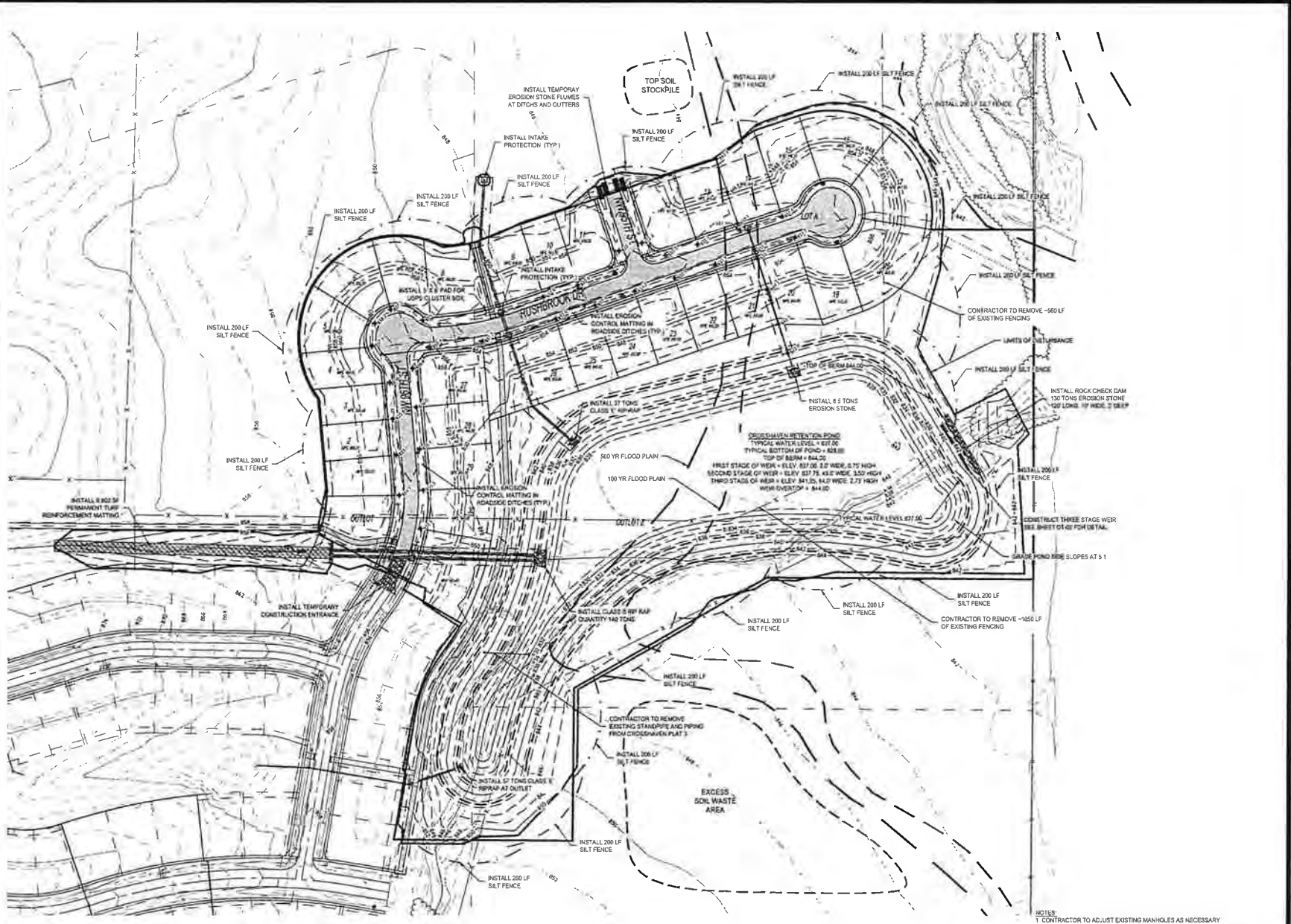
REVISONS
05 14 2014
06 12 2014
07 08 2014
08 04 2014
08 19 2014

DRAWN BY
C. SMITH

CHECKED BY
M. HEATH

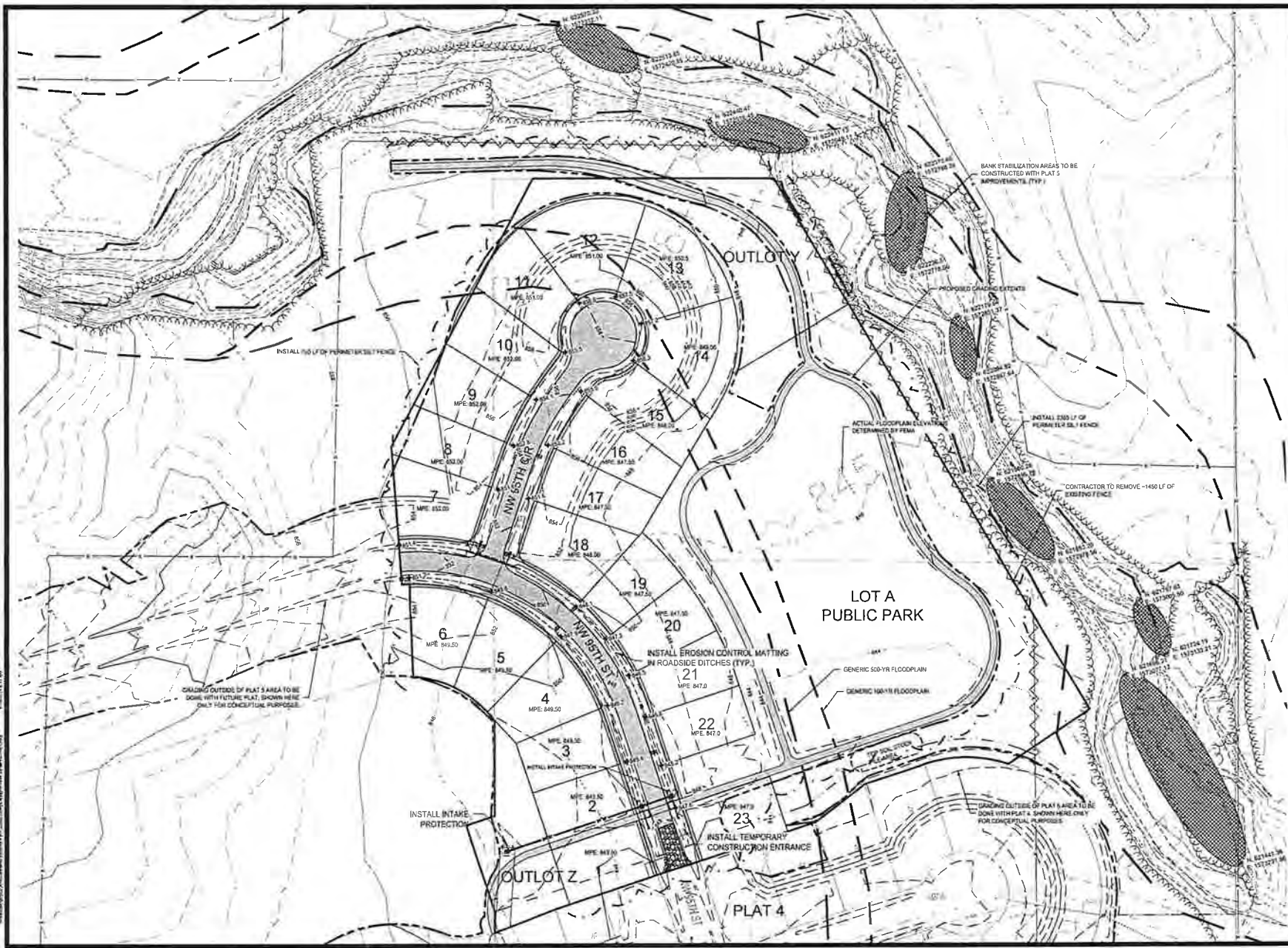
DESIGNED BY
C. SMITH

DATE
08/19/2014



NOTES:
1 CONTRACTOR TO ADJUST EXISTING MANHOLES AS NECESSARY
2 CONTRACTOR TO REMOVE TEMPORARY STANPIPE INSTALLED IN PLAT 3

McClure Engineering Company, Inc. 226053/04/24/14 GR-01



NOTICE
McClure Engineering Company retains and will assume all responsibility and liability for whether or not this plan is used for any purpose other than that intended by the engineer. The engineer is not responsible for any errors or omissions which may appear hereon, or for any consequences which may result from any error, omission, or misinterpretation of the plan, or for any damage or injury to any person or property, or for any loss of any kind, which may result therefrom.

COPYRIGHT
Copyright and printed rights in these documents are reserved by McClure Engineering Company. No reproduction, circulation, or use in any manner shall be made without written consent of the engineer or McClure Engineering Company.

**GRADING AND
EROSION CONTROL
PLAN**



**CROSSHAVEN
PLAT 5**

JOHNSTON, IA
274853
May, 2014

revision
05 12 2014
07 08 2014
08 04 2014
08 19 2014

DESIGNED BY: C. SMITH
CHECKED BY: C. SMITH
DRAWN BY: M. HEATH
SCALE: AS SHOWN