

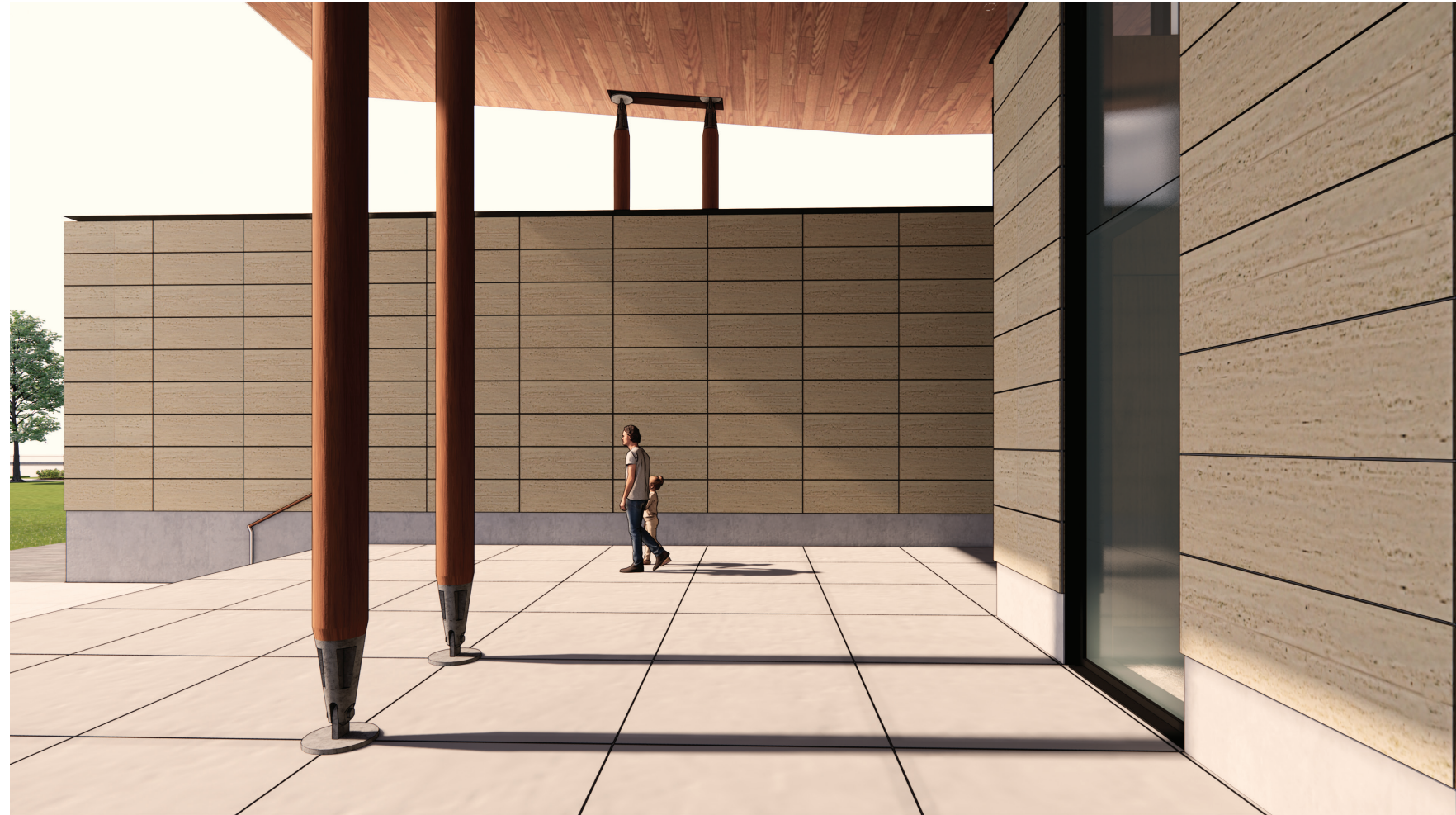
# Design Development Progress Meeting

Johnston City Hall - June 3, 2019



## Agenda / Design Items

- Schedule Update
- Square Footage Reduction
- West Elevation Ramp Access
- Sun Shading at Open Office



Schematic Design Floor Plan  
24,450 SF



Design Development  
Square Footage Reduction  
23,275 SF  
( -1,175 from Schematic Design )



West Elevation  
Ramp Access Option

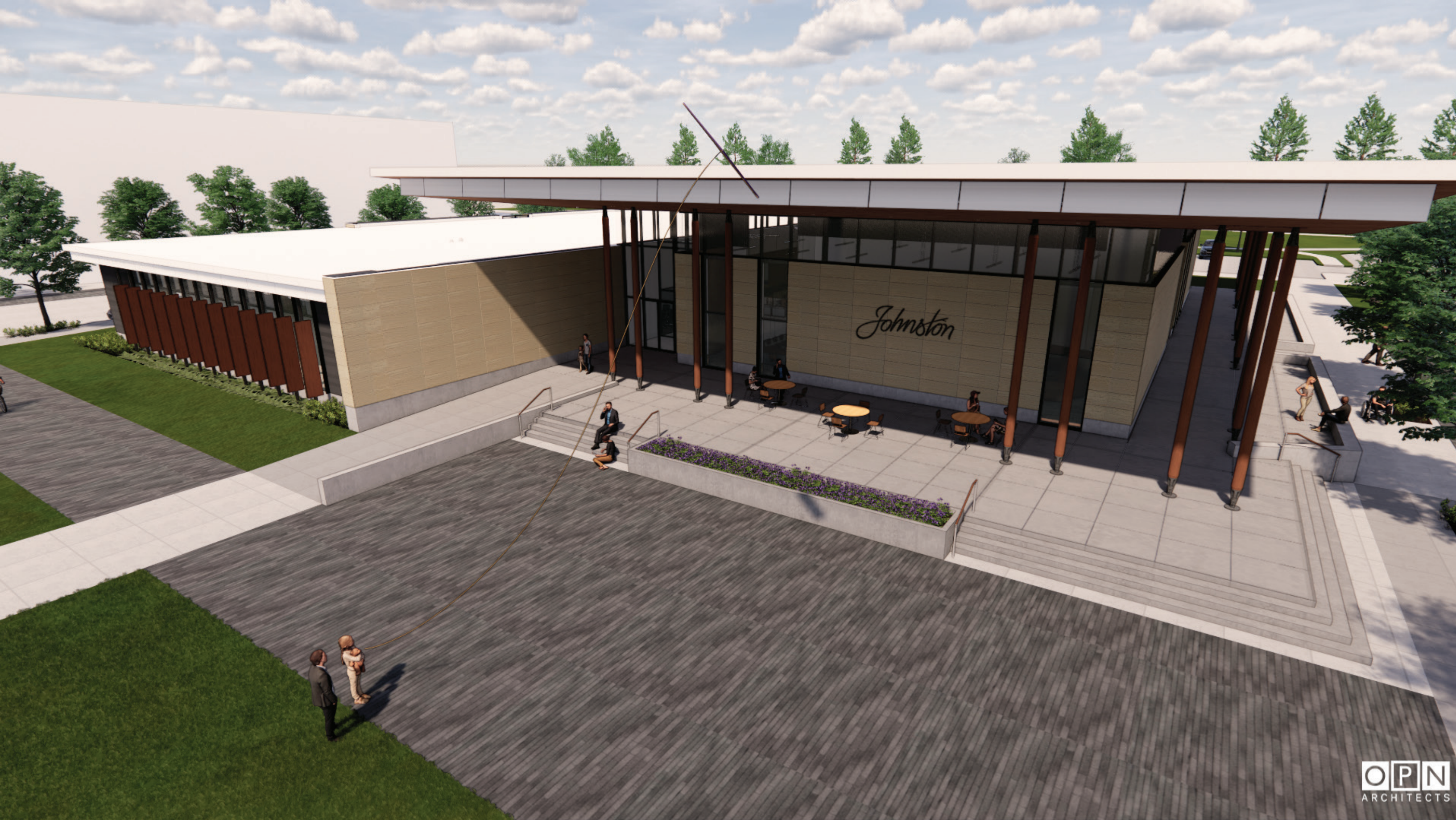
2' TOTAL RISE  
1:20 SLOPE MIN.  
RAMP  
  
NO HANDRAILS  
  
40' TOTAL RUN  
LENGTH  
PLUS LANDINGS

CONCRETE SITE  
WALL

SLOPED SIDEWALK

ADA PARKING



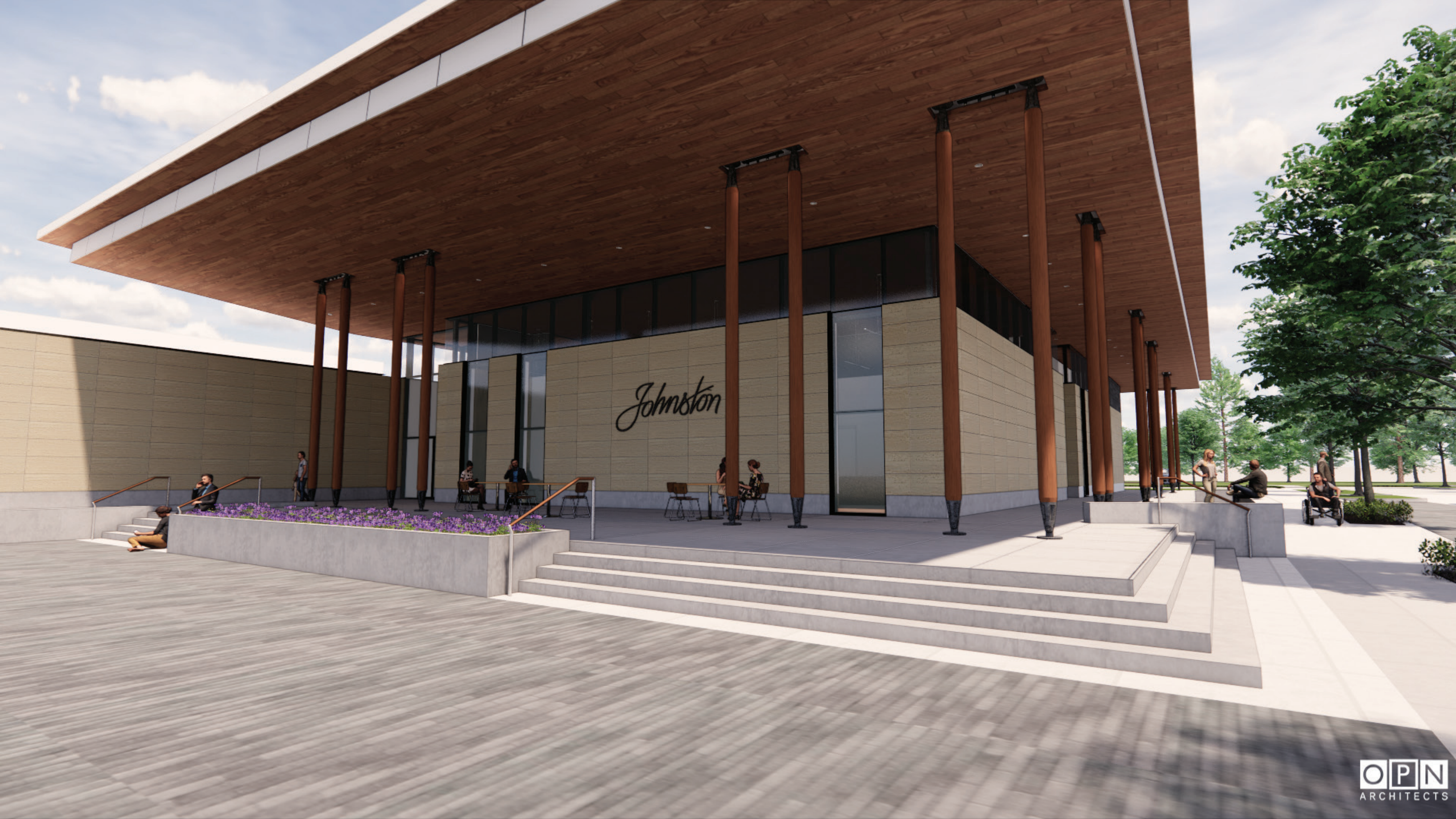


**BIRDS EYE VIEW OF RAMP OPTION**



VIEW FROM WEST





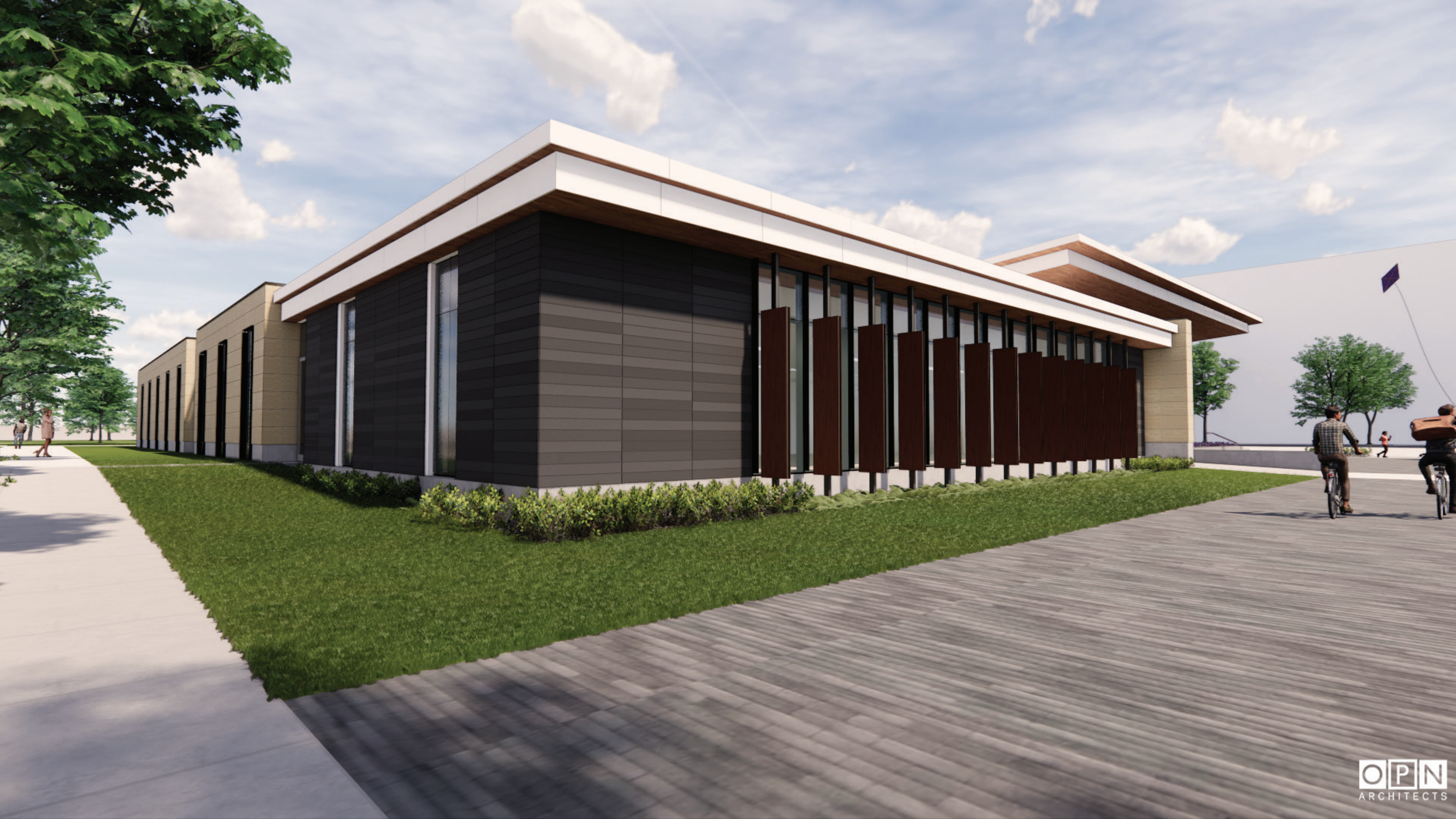




VIEW FROM EAST



VIEW FROM NORTH





ENTRY VIEW FROM WEST

# Next Steps...

